



Town of Berlin

**2023 Plan of Conservation and Development
Transportation, Infrastructure & Town Facilities Meeting**

6/23/22



Agenda

1. Introduction to the Plan of Conservation and Development and overview of the planning process (5 min.)
2. Review of findings from work to date (15 min.)
3. Discussion

Plan of Conservation and Development (POCD)

- The State of Connecticut requires municipalities to update their POCD at least once every ten years.
- Berlin's plan was last updated in 2013
- POCD's are required to address the following issues:
 - Physical and economic development
 - Transportation facilities
 - Land use
 - Population density
 - Housing including housing choice and affordable housing
 - Protection of drinking water supplies
 - Other requirements...



Town of Berlin

Plan of Conservation
and Development

Adopted by
The Berlin Planning
and Zoning Commission

Effective Date: September 1, 2013

The 2023 POCD will build upon other relevant and preceding plans

- State of CT Conservation & Development Plan (2013-2018 effective; 2018-2023 draft)
- 2014-2024 CRCOG Regional Plan of Conservation and Development
- 2013 Berlin POCD
- Kensington TOD studies



Plan Development

- The Plan is being guided by the Planning and Zoning Department and a committee comprised of Planning and Zoning Commission members.
- The Planning and Zoning Commission is responsible for adopting the Plan and the Town Council will review the Plan prior to adoption.

Planning and Zoning Commission

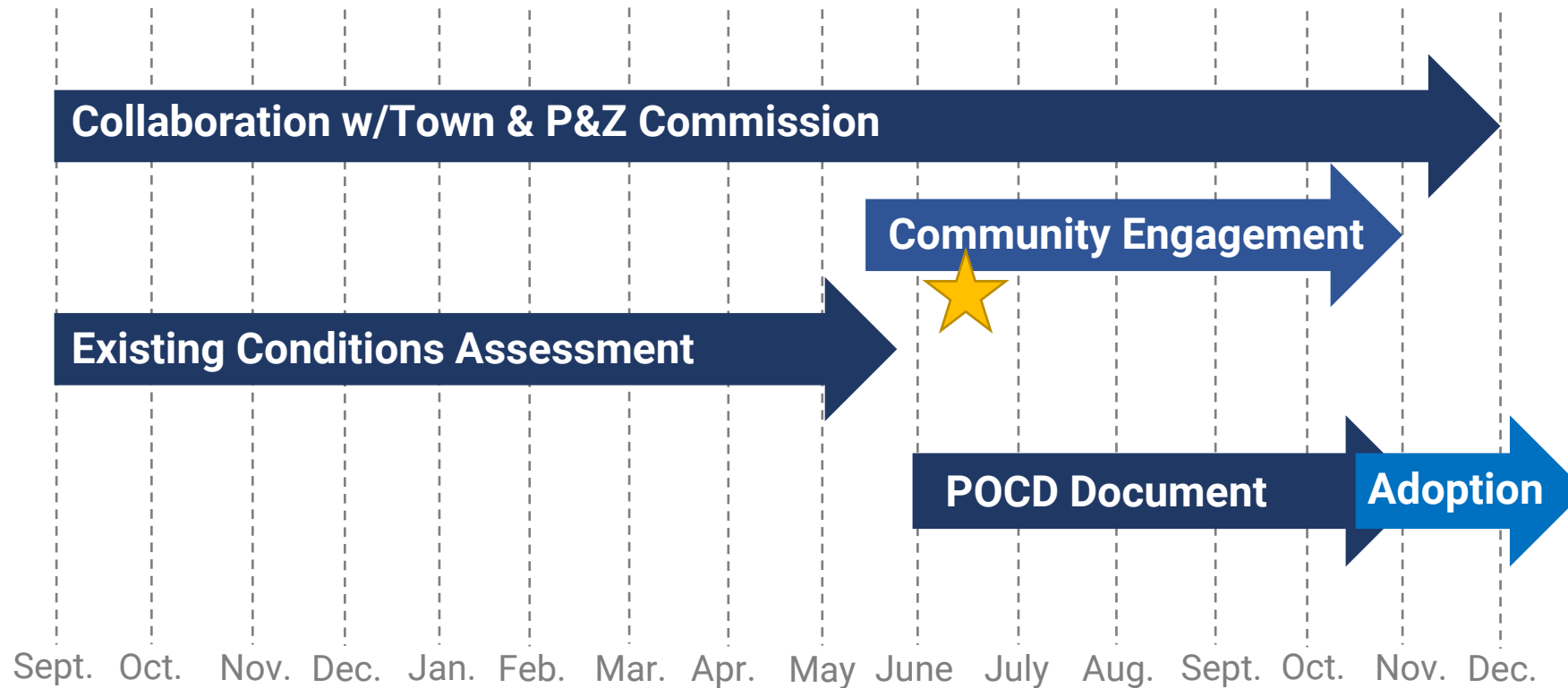
You are here: [Home](#) • [Departments](#) • [Boards & Commissions](#) • [Planning and Zoning Commission](#)

The Planning and Zoning Commission consists of seven regular members and three alternates for five year terms.

- [Planning and Zoning Commission Membership - OnBoard](#)
- [Planning & Zoning Commission - Updated Membership 2022](#)

Project Schedule

15 months (concluding by end of 2022)



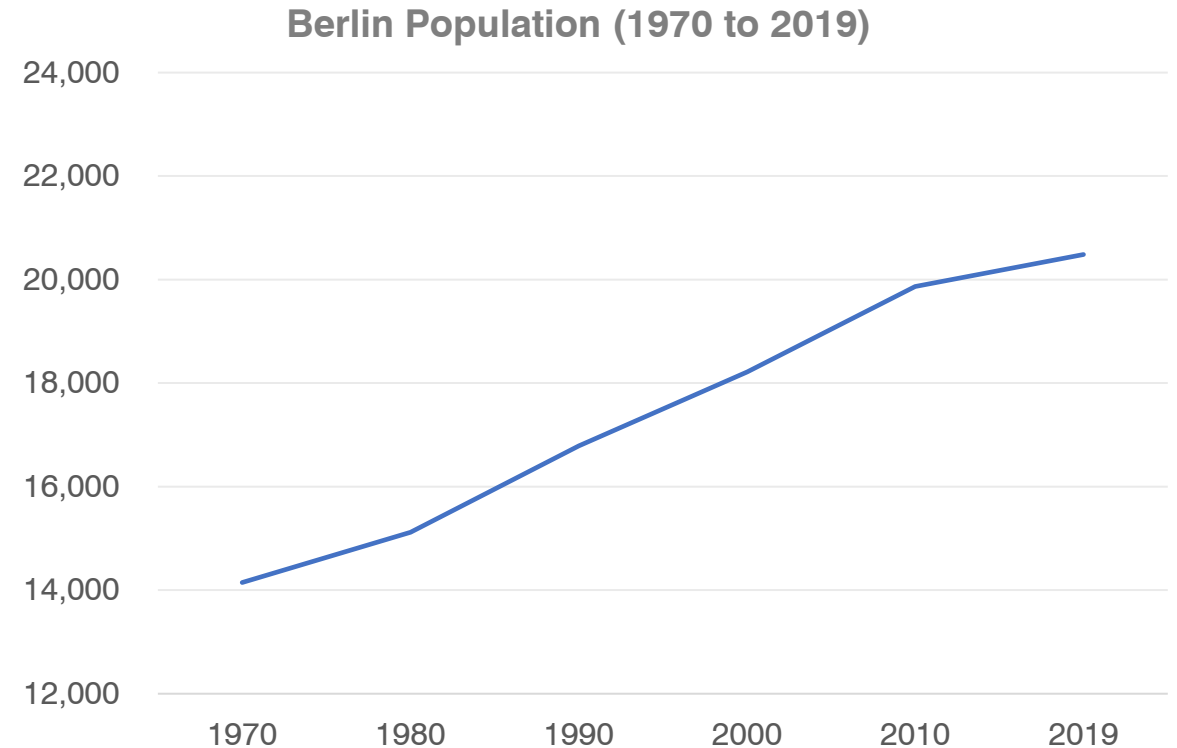
Population Trends and Characteristics



Image Credit: Berlin Fair

Population Change

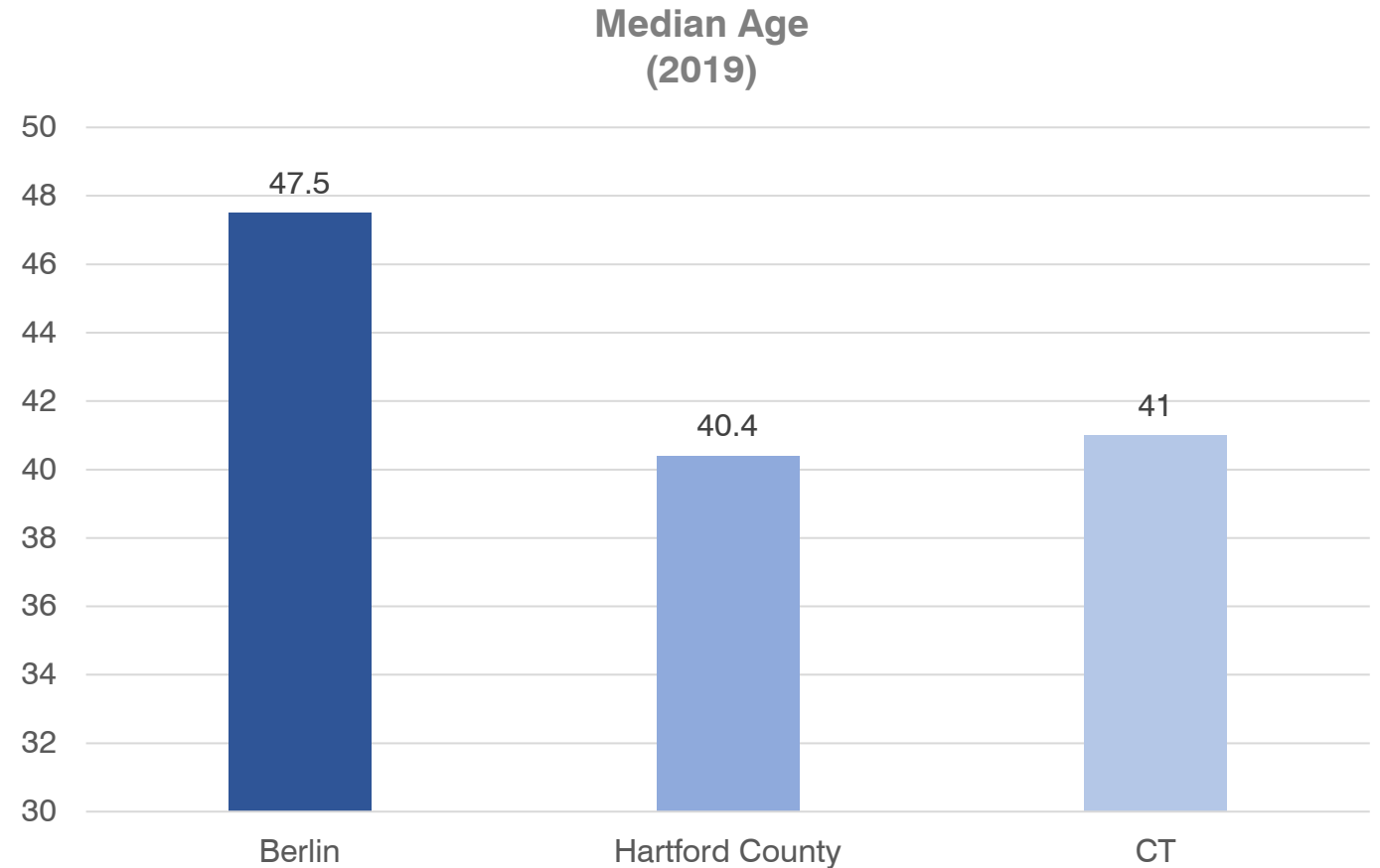
- Berlin's population grew at a steady rate in the 30 years between 1980 and 2010.
- Growth has slowed since 2010



Source: US Census and American Community Survey

Resident Age

- Berlin's population is significantly older than both Hartford County's and the State's.



Source: American Community Survey

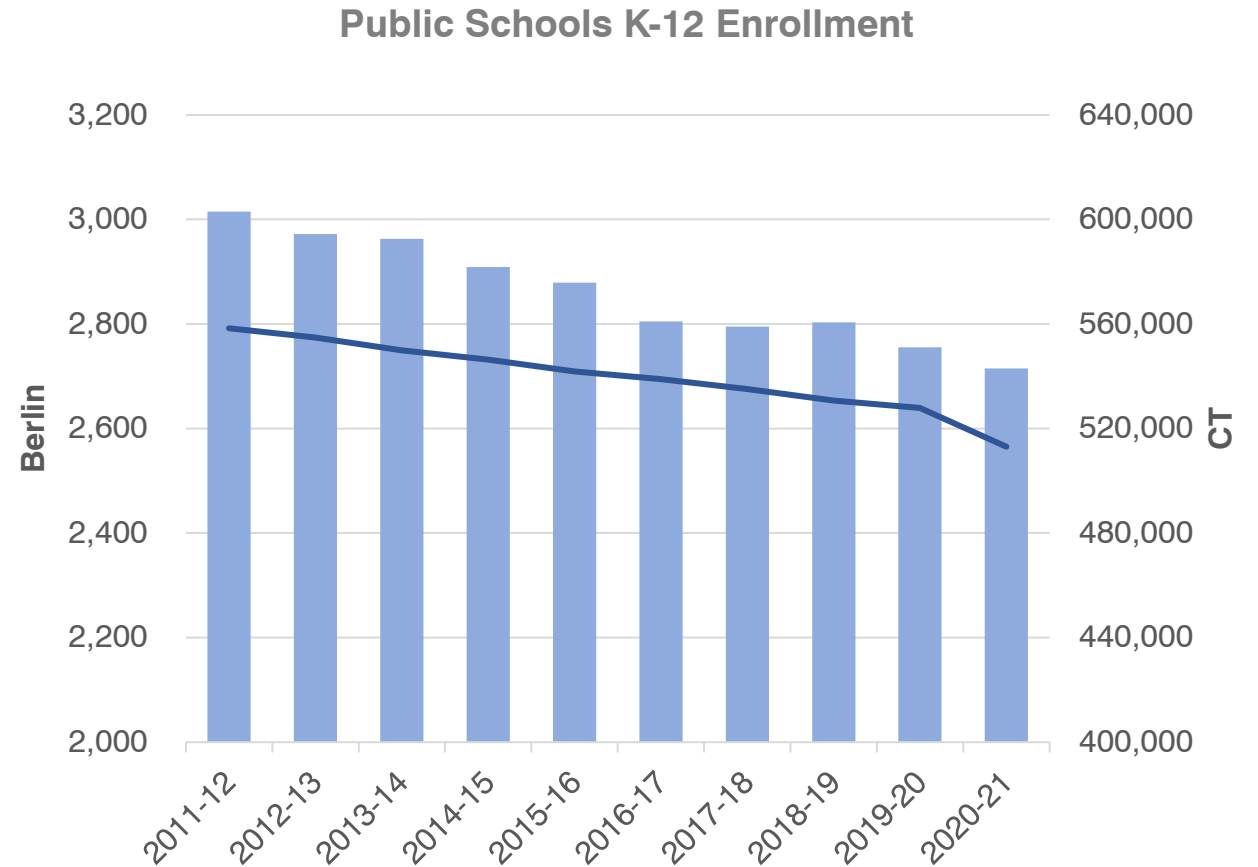
School Enrollment



Image Credit: FIP Construction

School Enrollment

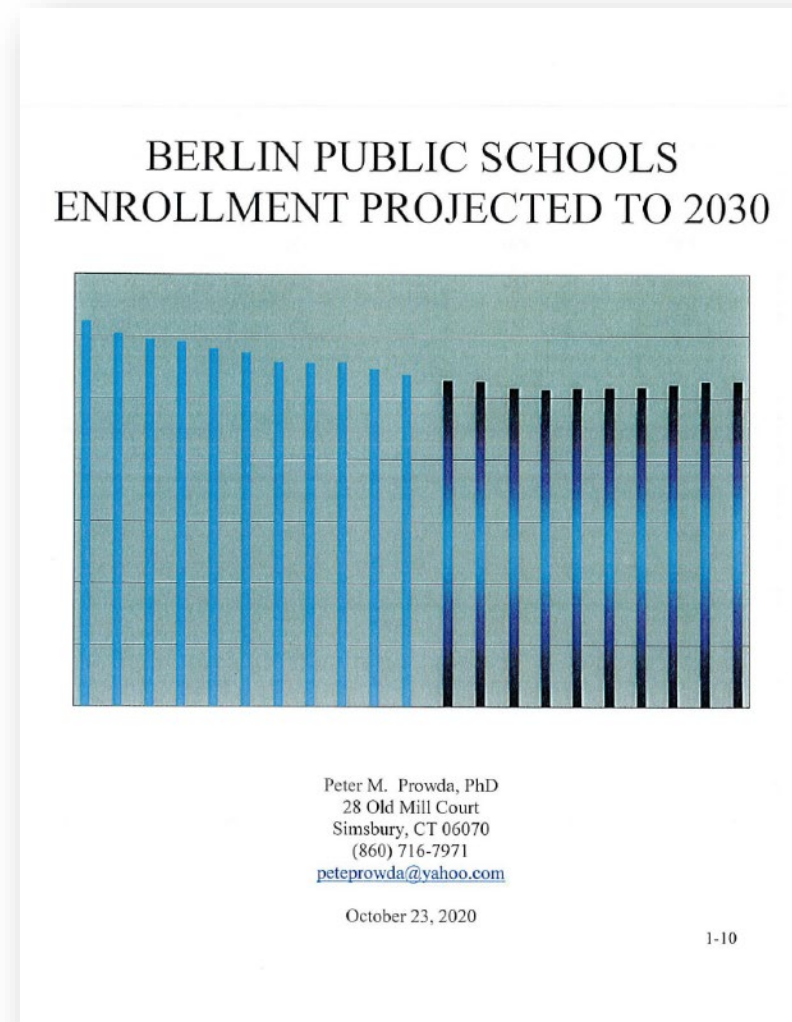
- School enrollment in Berlin's public schools has consistently decreased over the past ten years.
- This follows the same trend as school enrollment in the State.



Source: CT Department of Education

Berlin's Schools: Enrollment Projections

- Enrollment projections conducted for Berlin Schools in 2020 suggest that total school enrollment will contract slightly through 2030 but will remain relatively stable.
- While enrollment projects suggest that the District will continue to have adequate school capacity over the next decade, programming needs are constantly changing.



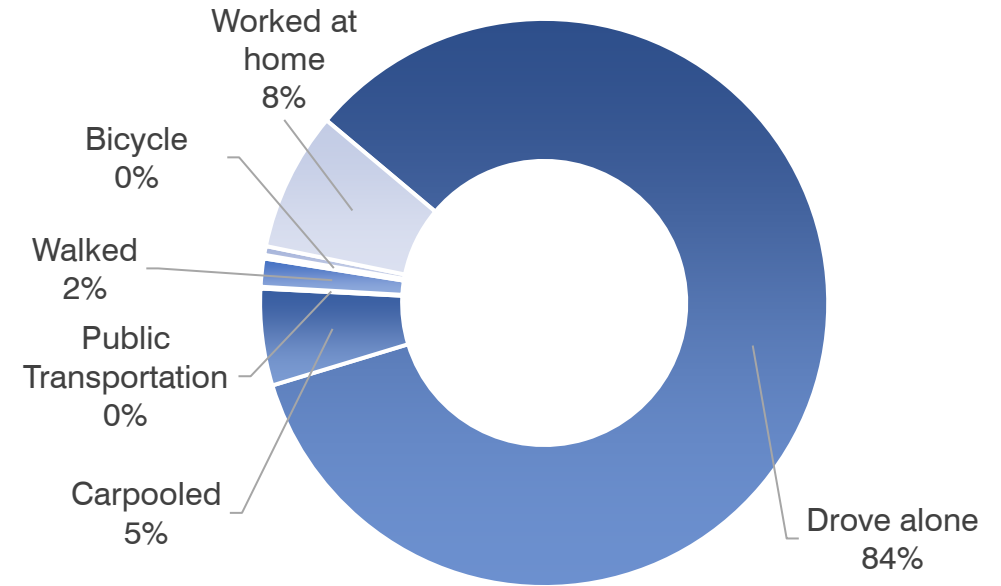
Transportation & Infrastructure



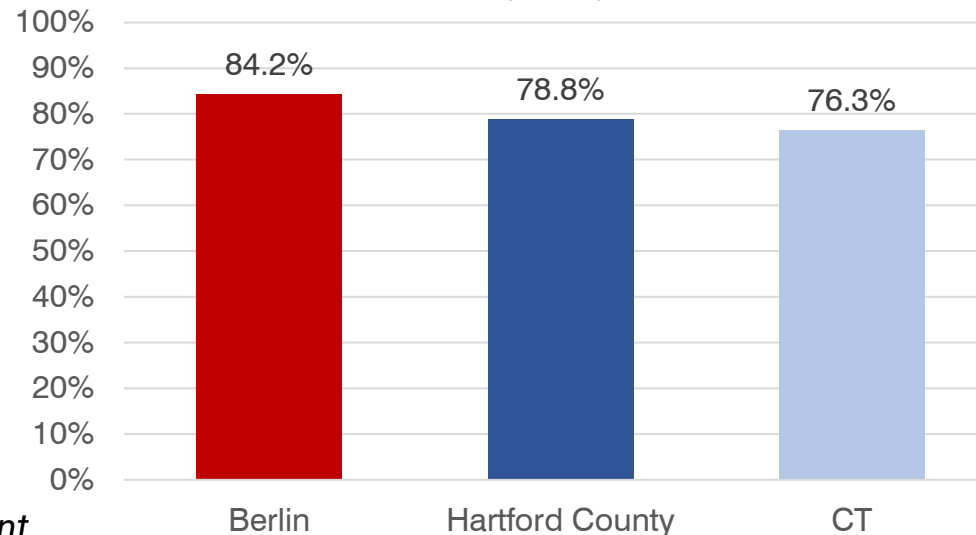
Transportation to Work

- Most (84%) of Berlin residents commute to work by driving alone.
- This is more than Hartford County and the State.
- 8% of residents worked from home in 2020.

Means of Transportation to Work
(2020)

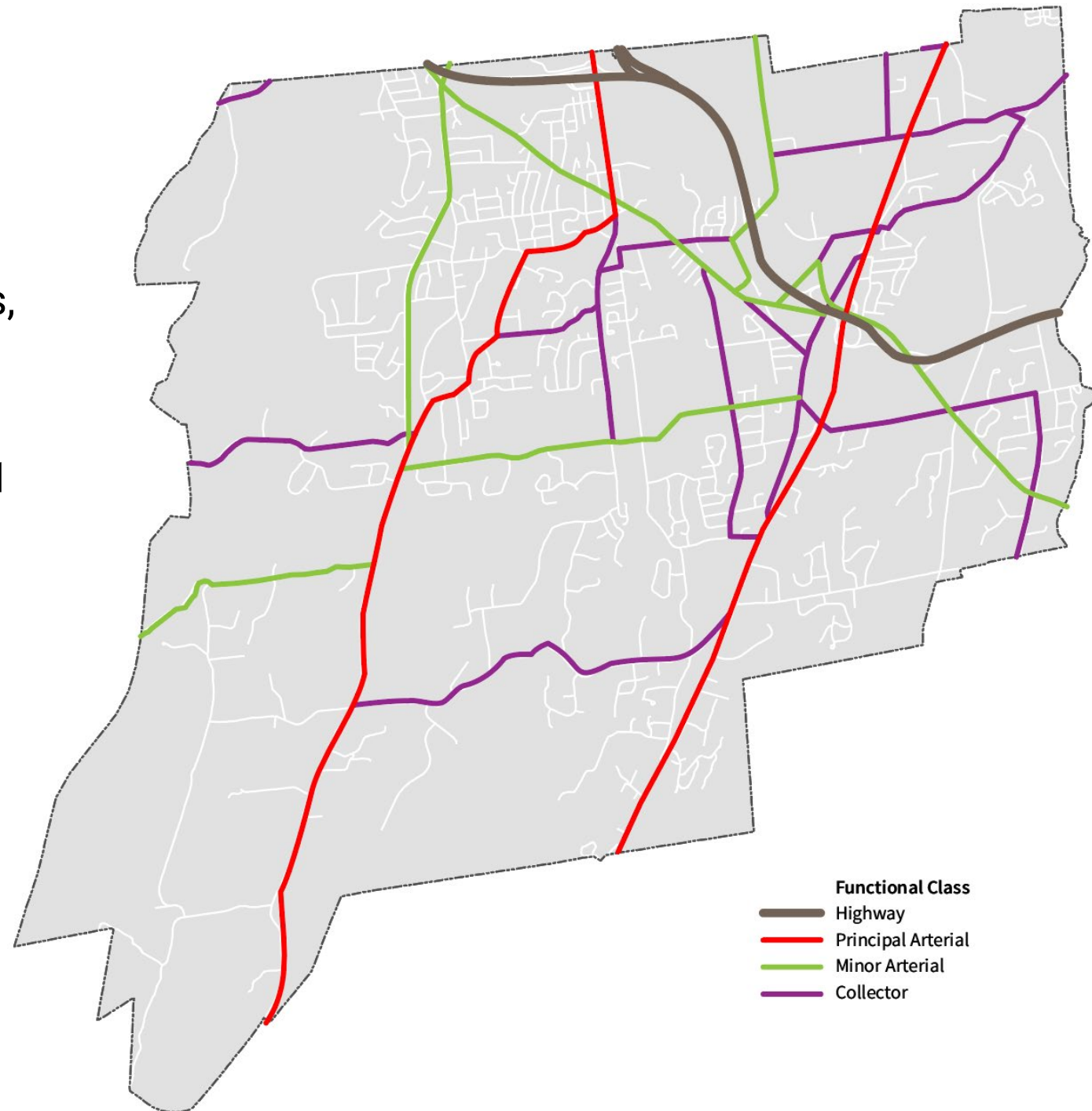


Drove Alone to Work
(2020)



Berlin's Roads

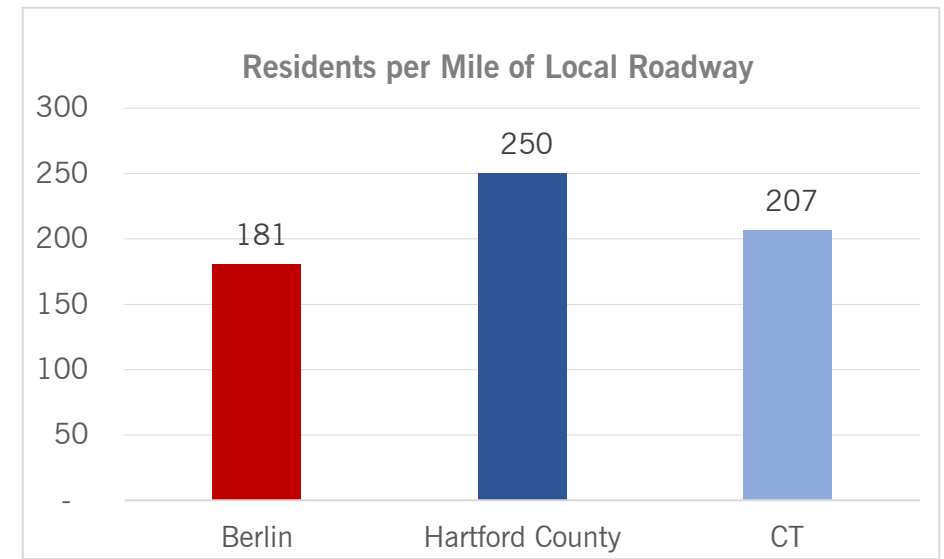
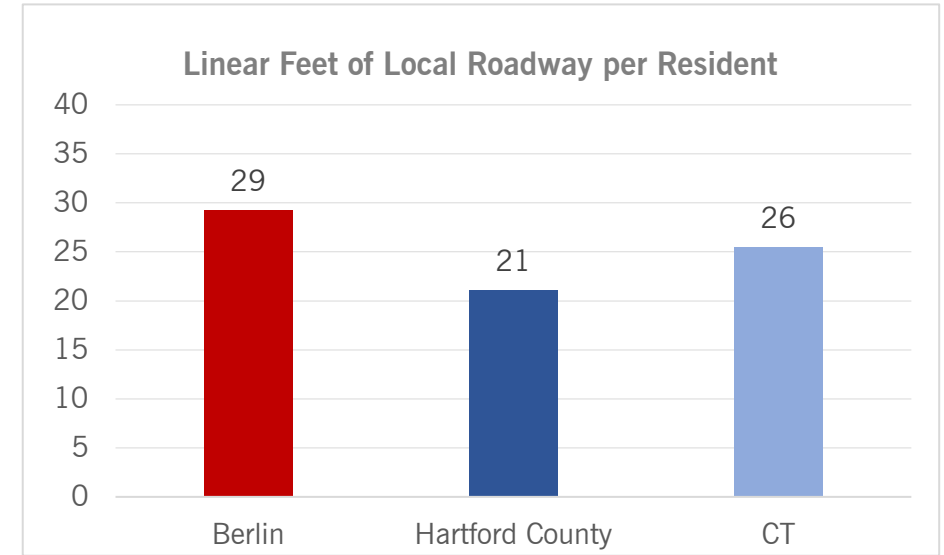
- Berlin's roadways are comprised of highways, arterials roadways, collectors, and local roads.
- Highways: Route 9 and 571
- Principal Arterials: Route 5/15, Route 71
- Minor Arterials
- Collectors



Berlin's Roads

- Berlin has 142 miles of State and Local roadways and highways
- 32 miles of State highway/110 miles of local roadway
- 29 linear feet of local roadway per resident
- 181 people per mile of roadway

More roadway per person = greater cost of maintaining roadways per capita



Bridges and Culverts

- Berlin has 37 local bridges and culverts, 15 of which are on the National Bridge Inventory
- Conditions range from good to poor

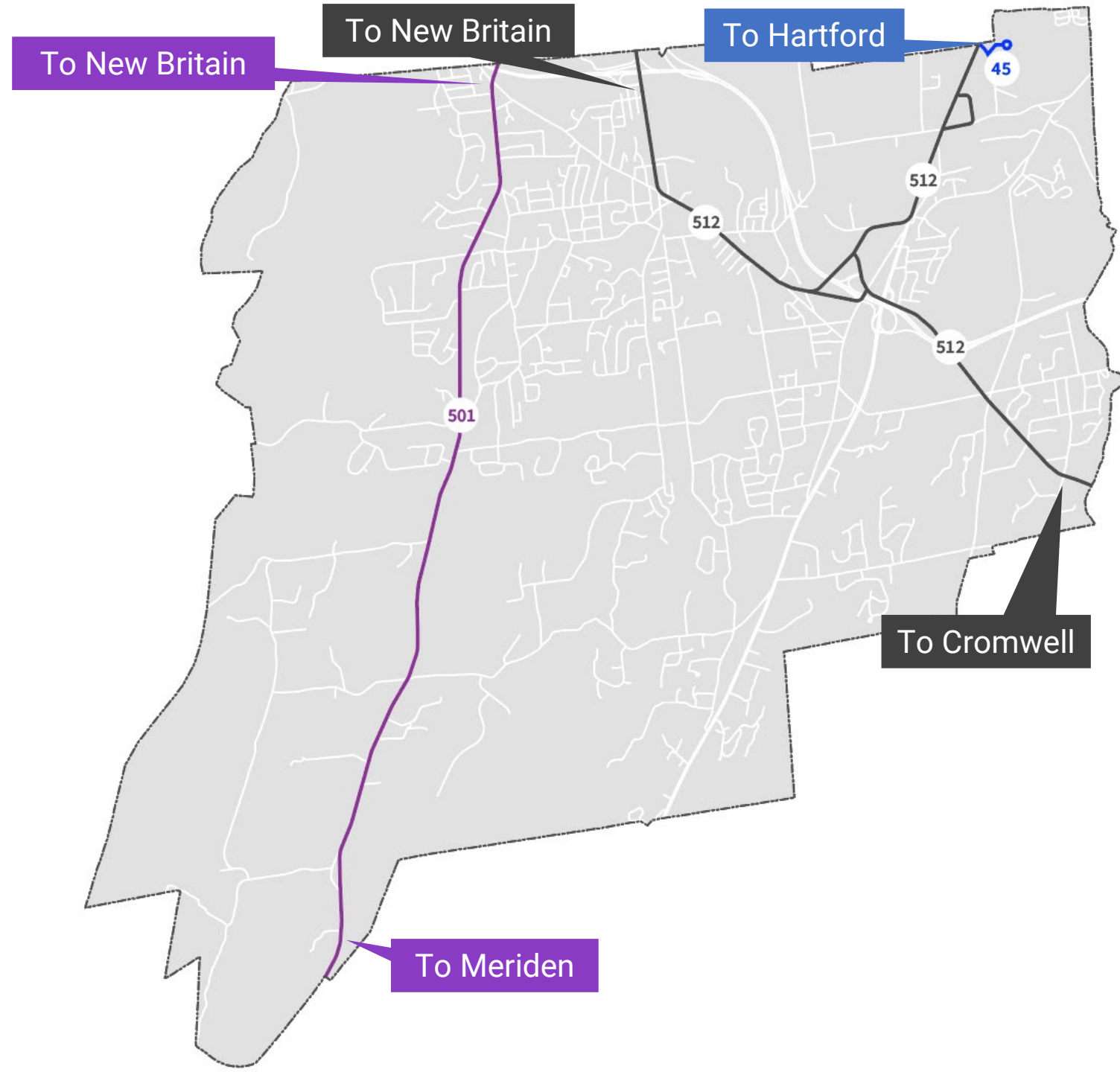
**In design,
approved LOTCIP
funding**

**Projects recently
completed under
the Federal Bridge
preservation
program**

Bridge Number	Type	Year Built	Facility Carried	Feature Spanned	Condition
06854	Concrete Culvert	2012	Beckley Rd	Spruce Brook	Good
05224	Prestressed Box Beam or Girders	1981	Berlin St	Mattabesset River	
04473	Steel Culvert	2019	Burnham St	Mattabesset River	
06824	Concrete Culvert	1950	Christian Ln	Willow Brook	Fair
05814	Steel Culvert	1970	Deming Rd	Willow Brook	Fair
04474	Prestressed T- Beam	2017	Farmington Ave	Mattabesset River	Good
06955	Culvert	1957	Glen St	Mattabesset River	Poor
06123	Concrete Culvert	1985	Heritage Dr	Stocking Brook	
03657	Steel Culvert	1958	Kensington Rd	Mattabesset River	Poor
04062	Prestressed Slab	1970	Lower Ln	Mattabesset River	Fair
06124	Concrete Culvert	1999	Middletown Rd	Spruce Brook	Good
04472	Steel Culvert	1974	Orchard Rd	Belcher Brook	Fair
04477	Prestressed Box Beam or Girders	1970	Wethersfield Rd	Mattabesset River	Fair
06122	Concrete Culvert	1980	Wildermere Rd	Belcher Brook	
04476	Prestressed Slab	1996	Worthington Ridge	Mattabesset River	

Transit: Bus

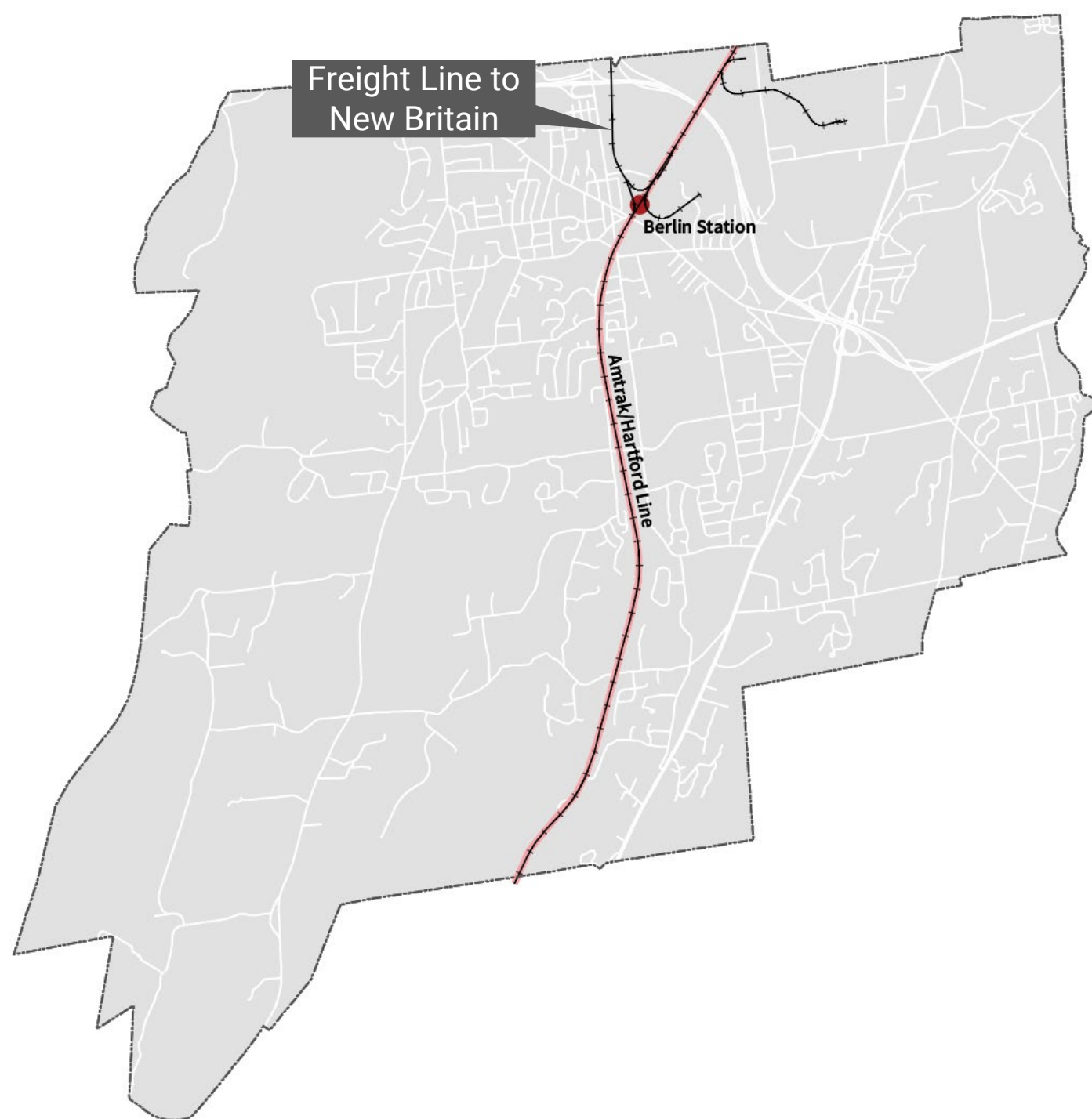
- Three CT Transit routes in Berlin
- Route 501 (along Chamberlin Highway) connecting between New Britain and Meriden
- Route 512 (along Route 372/Berlin Tpk) Street from Middletown to New Britain.
- Route 45 provides service between Eversource and Hartford.
- Paratransit operated by Senior Center Monday through Friday. Berlin and New Britain trips only.



Transit: Rail

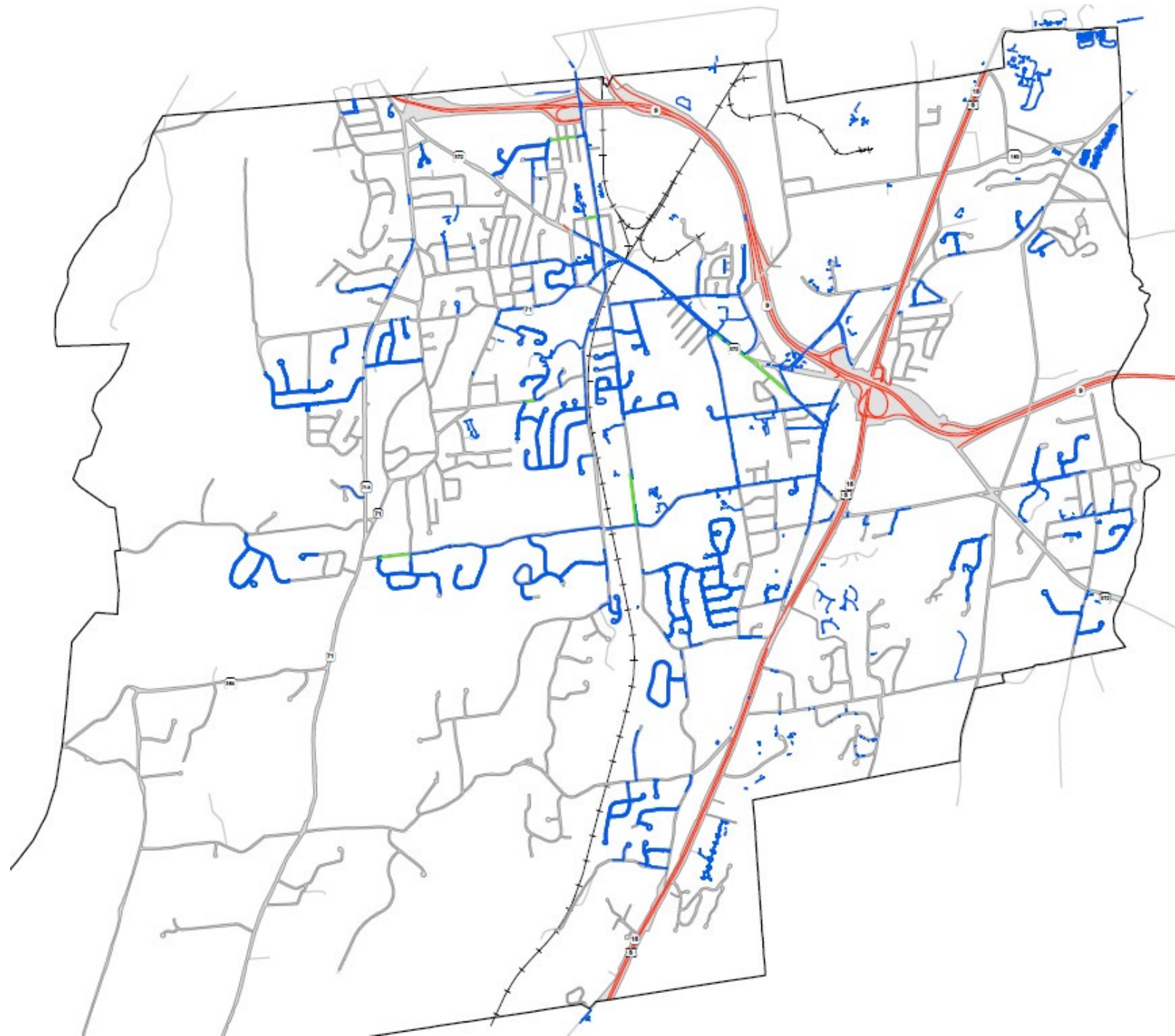
- Amtrak and Hartford Line Service via Berlin Station
- A commuter rail study conducted by CTDOT in 2016 explored feasibility of providing commuter rail service between Berlin Station and Waterbury Station along the Pan Am Freight Line. The study determined that:

Implementing passenger rail service at this time is not viable due to its high costs, potentially low ridership, and difficulties in upgrading the Terryville Tunnel. An alternative might be to extend bus service within the corridor and consider express service between Bristol and Waterbury as a near term improvement.



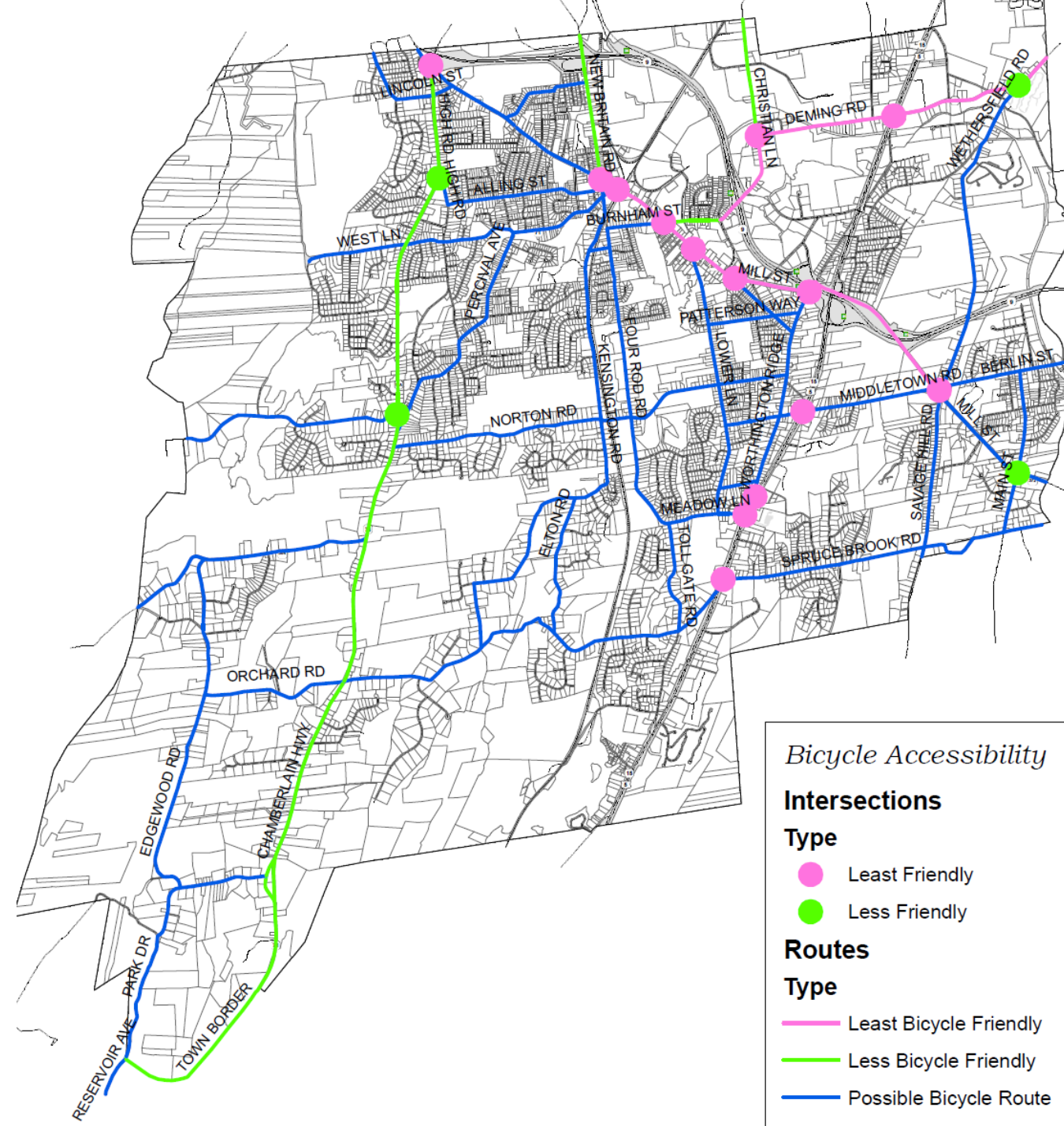
Sidewalks

- Berlin's sidewalk network is limited with sidewalks more extensive in Kensington Center and in areas more recently developed.
- 89 miles of sidewalk in public right-of-way (27% of public road edge)
- The Town budgets \$100k to \$125k per year for sidewalk repairs and replacement.



Bike Routes

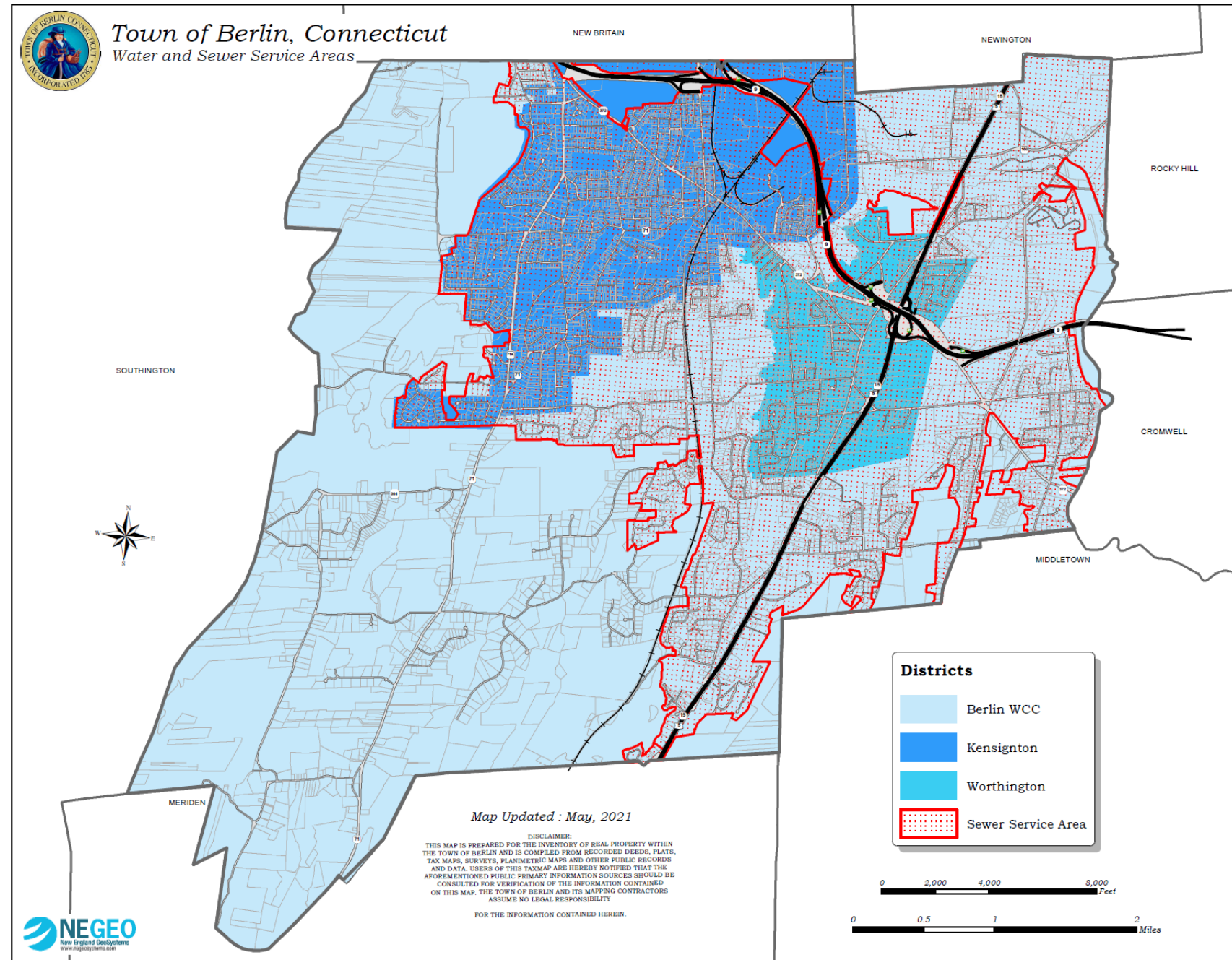
- Multiple corridors in Berlin have been identified as possible bicycle routes.
- Berlin currently has no on-street bicycle facilities such as bicycle lanes, buffered bicycle lanes, or separated bicycle lanes.
- Bicycle lanes and Complete Streets improvements currently being designed for Episcopal Road and Rowley Street. Project will be funded through CRCOG with State funds.



Water and Sewer Service Areas

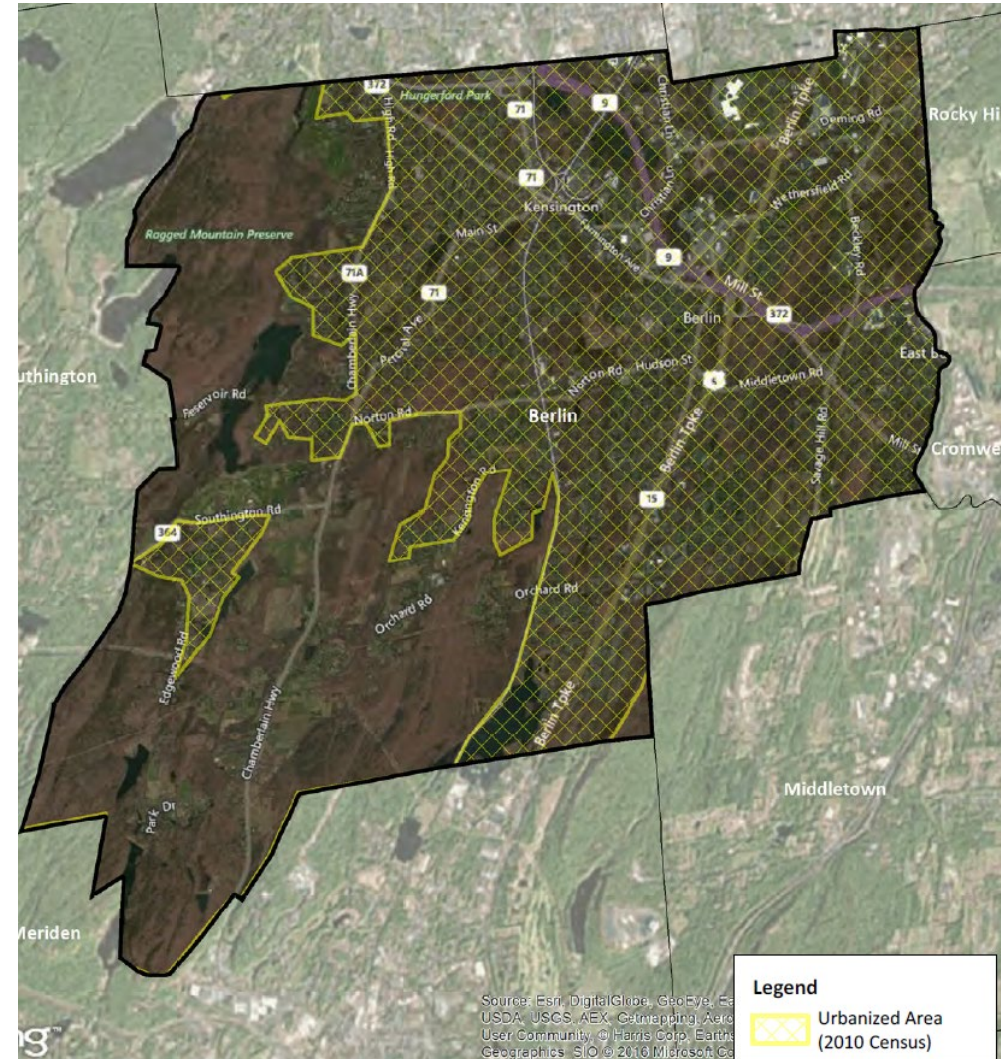
Berlin is served by three water districts:

- Berlin WCC
- Kensington
- Worthington



Stormwater Infrastructure

- The Town adopted a stormwater management plan in 2017 as required by its Municipal Separate Storm Sewer System (MS4) permit.
- Annual reporting is conducted as required by the permit.
- The permit and compliance activities are focused on Urbanized Areas (UA), which are the areas defined by the U.S. Census Bureau. The UA within Berlin comprises 58% of the Town's area.
- The plan has the following components:
 - Public Education and Outreach on Stormwater Impacts
 - Public Involvement/Participation
 - Illicit Discharge Detection and Elimination
 - Construction Site Stormwater Runoff Control
 - Postconstruction Stormwater Management in New Development and Redevelopment
 - Pollution Prevention/Good Housekeeping for Municipal Operations



The Mattabassett District

- The Mattabassett District's Water Pollution Control Facility processes wastewater from New Britain, Berlin, Cromwell, Middletown, Newington, Rocky Hill and Farmington, and discharges treated water into the Connecticut River.
- Berlin joined the District in 1961.
- Flow from Berlin averages 3.35 million gallons per day. This is 16% of flow into the system.
- The District has requested that participating districts reduce their inflow and infiltration into the system to assist with their permit compliance.



Town Facilities



Town Facilities

- Municipal Complex
- Fire Stations
- Berlin Senior Center
- Animal Control Facility
- Berlin Municipal Garage
- DPW Complex
- Material Storage Yard
- Parks and Recreation Facilities



Town Hall

Berlin's Schools

- **Berlin High School**, constructed 1953, 2017 upgrades (866 students). Also a primary emergency shelter.
- **Catherine M. McGee Middle School**, constructed 1969, renovated 1996, 2010, 2019 (600 students). Also a secondary emergency shelter.
- **Mary E. Griswold Elementary School**, constructed 1964, renovated 1992, 2019 (435 students)
- **Emma Hart Willard Elementary School**, constructed 1955, renovated 2013, 2019 (508 students)
- **Richard D. Hubbard Elementary School**, constructed 1965, renovated 1993, 2019 (213 students)



Public Safety Facilities

- **Police Department** located at Berlin Town Hall
- **Fire Station #1**, Berlin Vol. Fire Department (Constructed in 1946, updates in 1980, 1995)
- **Fire Station #2**, East Berlin Vol. Fire Department (Constructed in updates in 1960, 1972, 1990)
- **Fire Station #3**, Kensington Vol. Fire Department (Constructed in 1968, updates in 1976, 1995)
- **Fire Station #4**, So. Kensington Vol. Fire Department (Town owned, Constructed in 1973, updates in 1994). Masterplan for facility updates is being considered.



Public Safety Services

Fire
Volunteer force
organized into
four separate
companies
housed in four
fire stations

Ambulance
Contracted with
Hunter's
Ambulance
Service (now
Hartford Health
Care) through
2030

Police
42 authorized
sworn positions

Physical Services Complex

- 7.9 acre site with 8 buildings
- Structures built between 1957 and 1983
- Includes highway garage, salt shed, maintenance garage, water and sewer building, animal control facility
- Site is located in a flood zone
- \$1.6 million of renovations were recommended by a 2014 facilities study



Berlin Senior Center

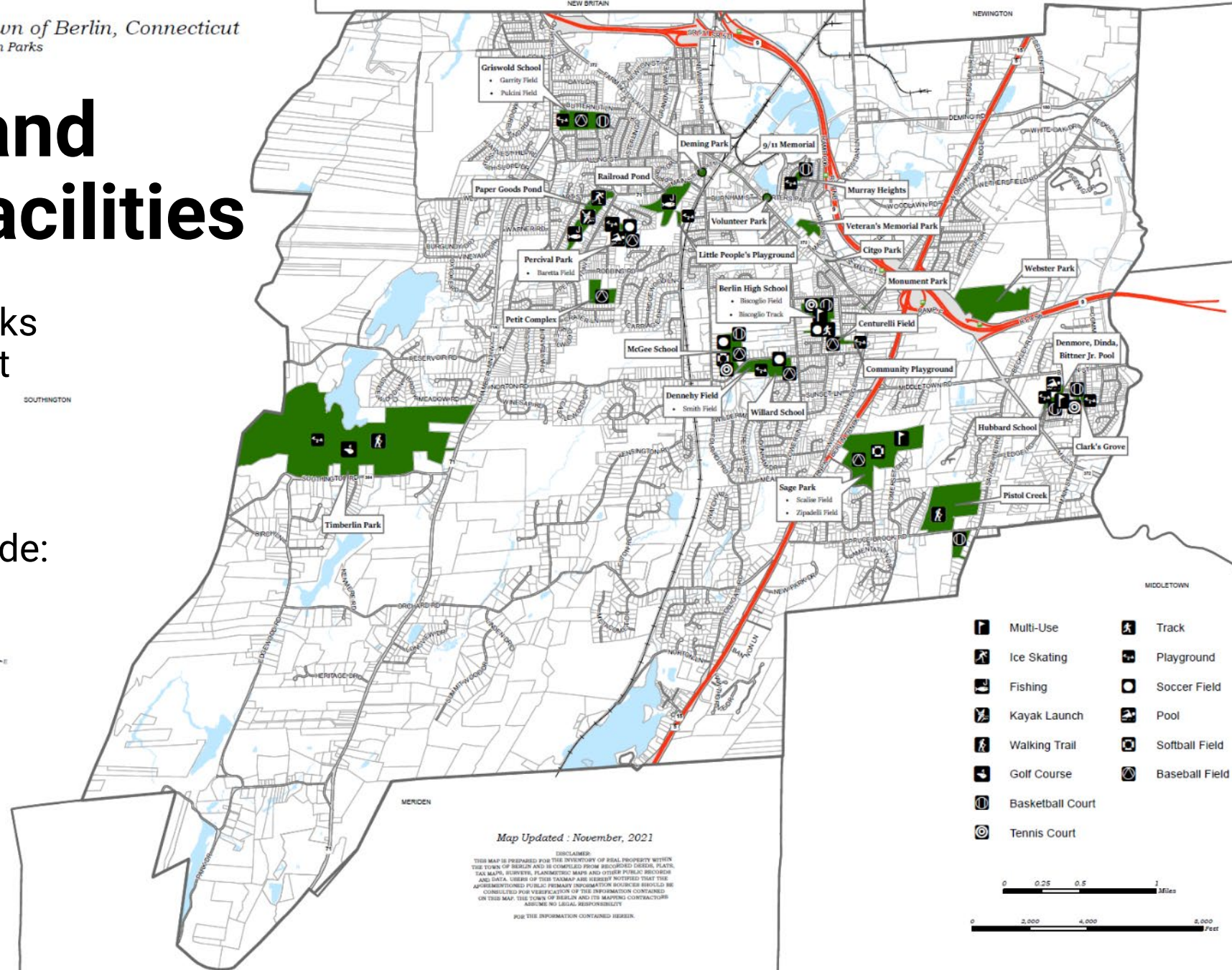
- Constructed in 1955
- Improvements in 1985 and 2009
- 17,575 sf
- Leased space from the Housing Authority





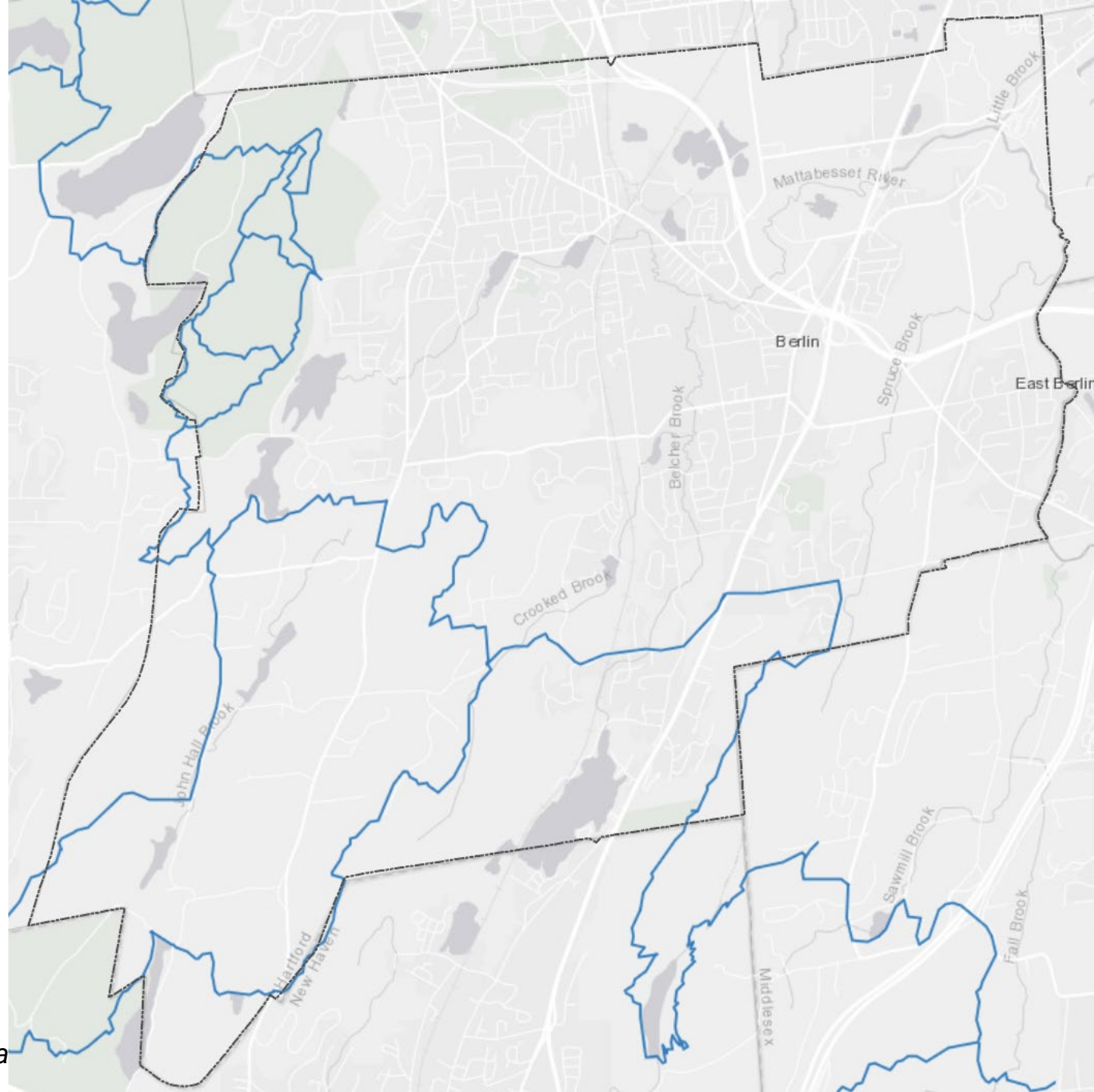
Town Parks and Recreation Facilities

- The Town has multiple parks ranging in size from pocket parks and playgrounds to large parks with active and passive recreation
- Recreation amenities include:
 - Athletic Fields
 - Ball Courts
 - Playgrounds
 - Pools
 - Fishing
 - Kayak Launch
 - Golf Course



Trail Facilities

- New England National Scenic Trail (Blue Blazed Trails)
 - Metacomet Trail
 - Mattabasset Trail
- Local Trails
 - Beckley Quarry
 - Bicentennial Park/Hatchery Brook
 - Blue Hills Conservation Area
 - Pistol Creek
 - Timberlin Park
 - Ragged Mountain
- Potential Connections
 - Connection to New Britain and CT Fastrak pathway
 - Trail connection between Timberlin and Ragged Mountain



Planned Facilities: Community and Senior Center

- In 2019 The Town received a \$750,000 grant from the State of Connecticut to do a comprehensive study and to prepare preliminary design plans for a new Community and Senior Center.
- The Public Building Commission selected QA+M Architecture and a contract was signed in April 2020 to execute a pre-referendum study and post-referendum design-build documentation.
- The facility would be two stories and 70,000 sf including an aquatics center.
- The facility, as designed, is estimated to cost between \$36 and \$44 million to construct.
- Next step would be a referendum.



Discussion

- What are the issues and needs with respect to Transportation, Infrastructure & Town Facilities in Berlin?

Discussion

- What ideas do you have for meeting needs related to Transportation, Infrastructure & Town Facilities in Berlin?
- What needs to be done and how can the plan support investment in these resources?
- What and where are the opportunities?

More Opportunities to Participate!

- **Visit the Town's Planning and Zoning Webpage**
 - Meeting materials and updates regarding the plan
- **Take the survey if you have not already**
 - www.surveymonkey.com/r/berlinpocd