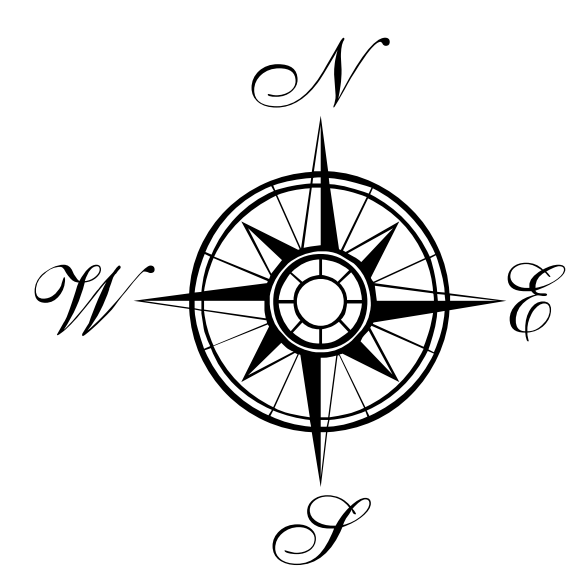
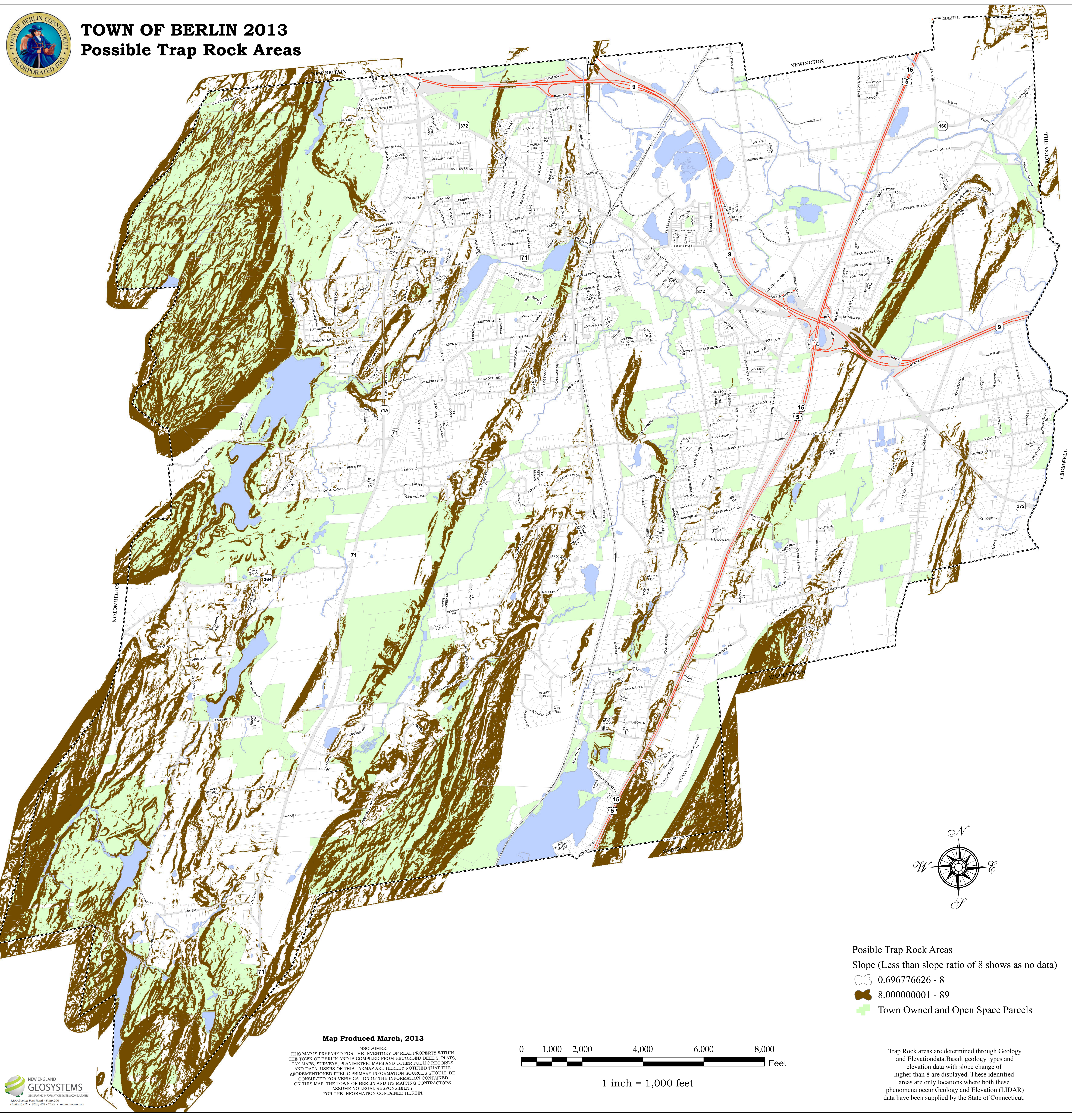


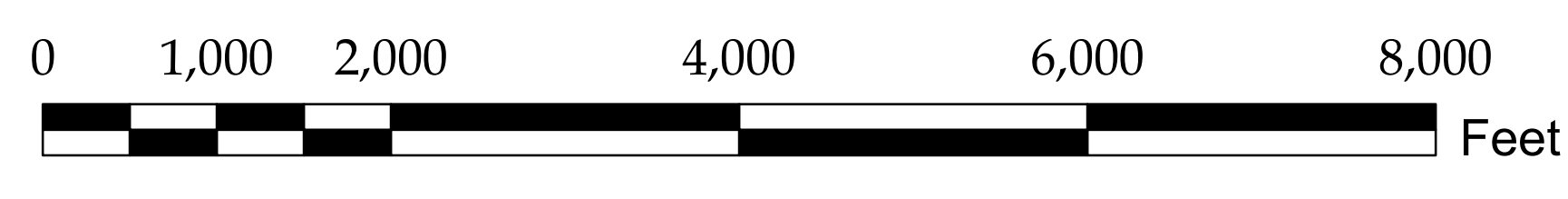


# TOWN OF BERLIN 2013

## Possible Trap Rock Areas



- Possible Trap Rock Areas**  
 Slope (Less than slope ratio of 8 shows as no data)
- 0.696776626 - 8
  - 8.000000001 - 89
  - Town Owned and Open Space Parcels



1 inch = 1,000 feet

**Map Produced March, 2013**

DISCLAIMER:  
 THIS MAP IS PREPARED FOR THE INVENTORY OF REAL PROPERTY WITHIN THE TOWN OF BERLIN AND IS COMPILED FROM RECORDED DEEDS, PLATS, TAX MAPS, SURVEYS, PLANIMETRIC MAPS AND OTHER PUBLIC RECORDS AND DATA. USERS OF THIS TAXMAP ARE HEREBY NOTIFIED THAT THE AFOREMENTIONED PUBLIC PRIMARY INFORMATION SOURCES SHOULD BE CONSULTED FOR VERIFICATION OF THE INFORMATION CONTAINED ON THIS MAP. THE TOWN OF BERLIN AND ITS MAPPING CONTRACTORS ASSUME NO LEGAL RESPONSIBILITY FOR THE INFORMATION CONTAINED HEREIN.

Trap Rock areas are determined through Geology and Elevation data. Basalt geology types and elevation data with slope change of higher than 8 are displayed. These identified areas are only locations where both these phenomena occur. Geology and Elevation (LIDAR) data have been supplied by the State of Connecticut.