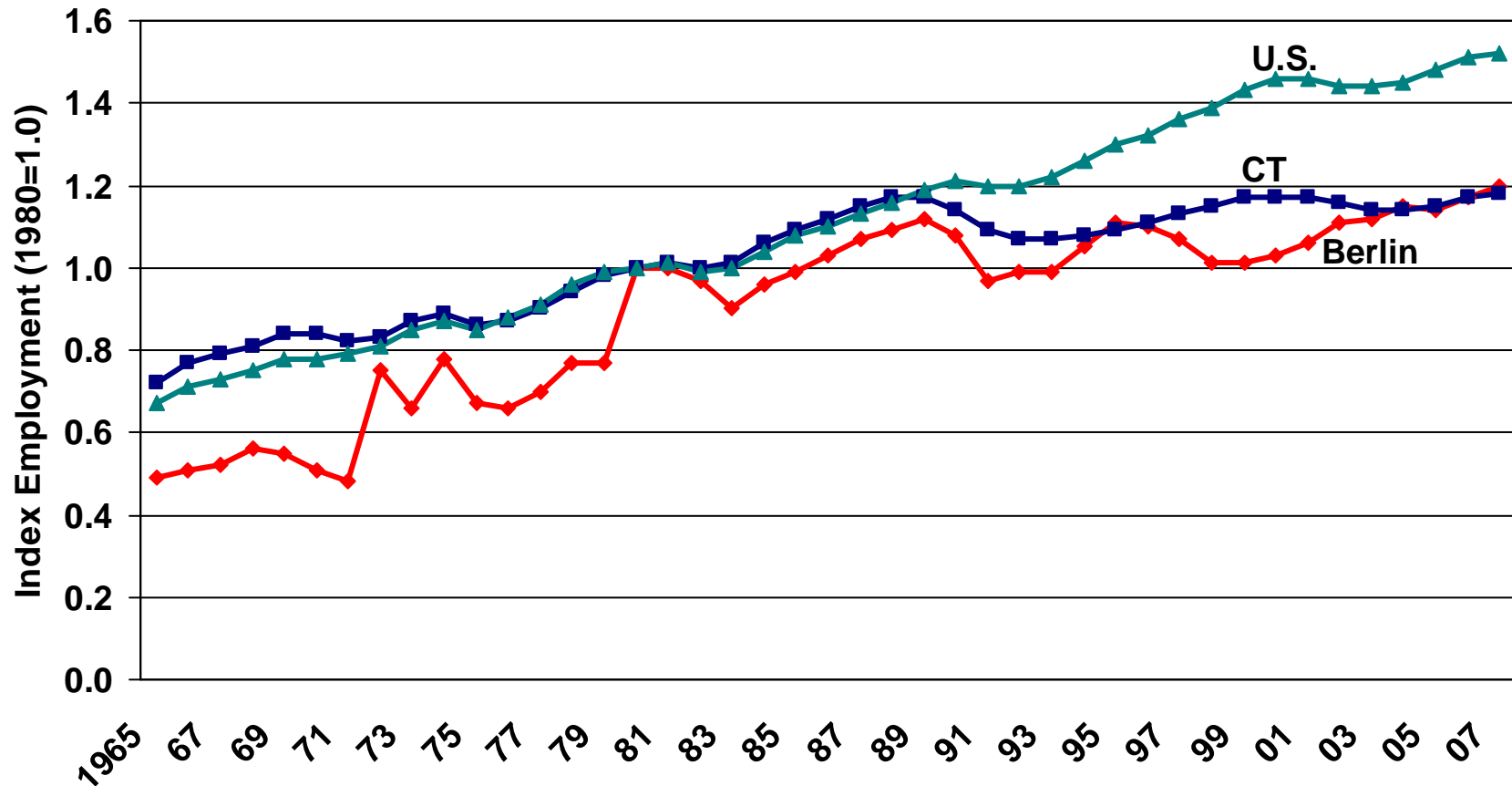


Recent employment growth in Berlin has exceeded the state trend.



Sources: Connecticut Department of Labor, U.S. Bureau of Labor Statistics

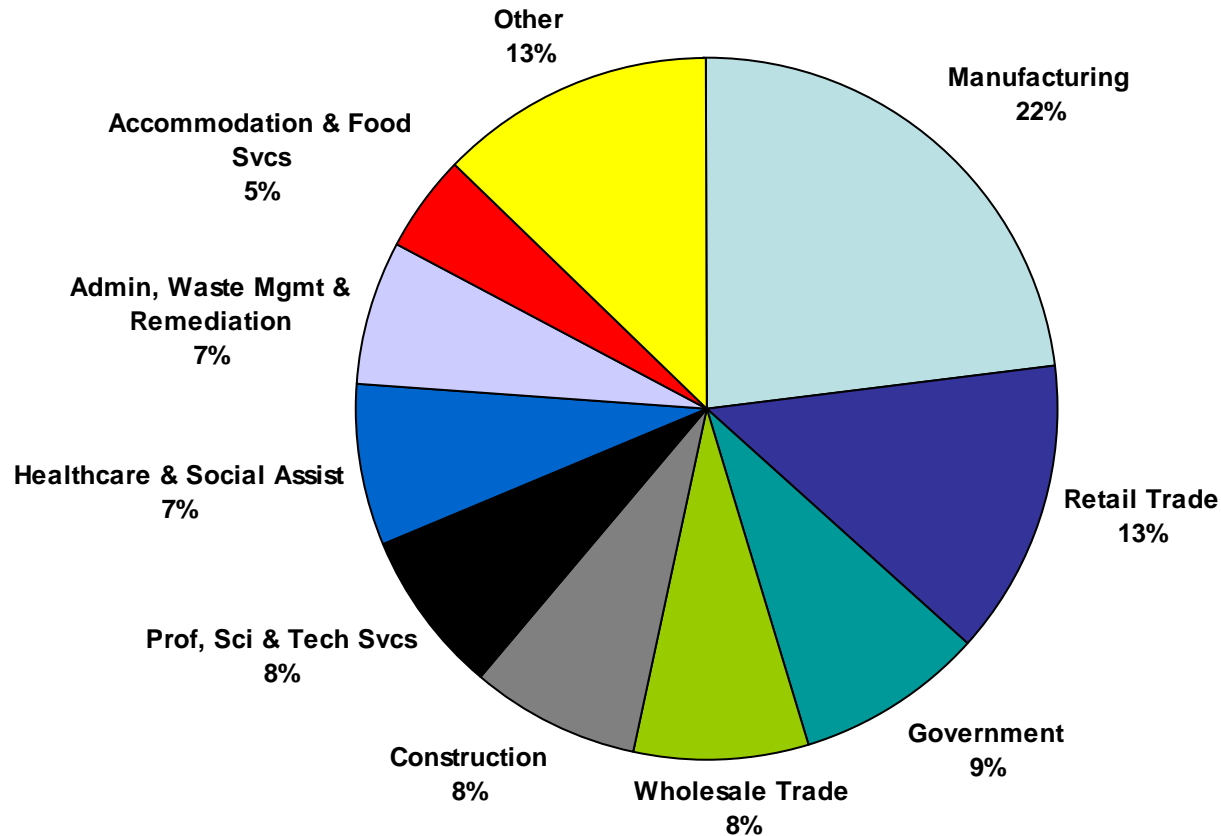
Berlin's employment growth during the 2000s has been much higher than the labor shed and the state, both of which have been decreasing.

	Employment		Empl Growth	
	2000 (1000s)	2007 (1000s)	#	%
Berlin	10.5	12.0	1,444	13.7
Labor Shed	459.7	458.7	-981	-0.2
Connecticut	1,635.8	1,626.2	-9,650	-0.6

Source: Connecticut Department of Labor

Manufacturing was Berlin's largest employment sector.

Berlin Employment by Industry, 2007



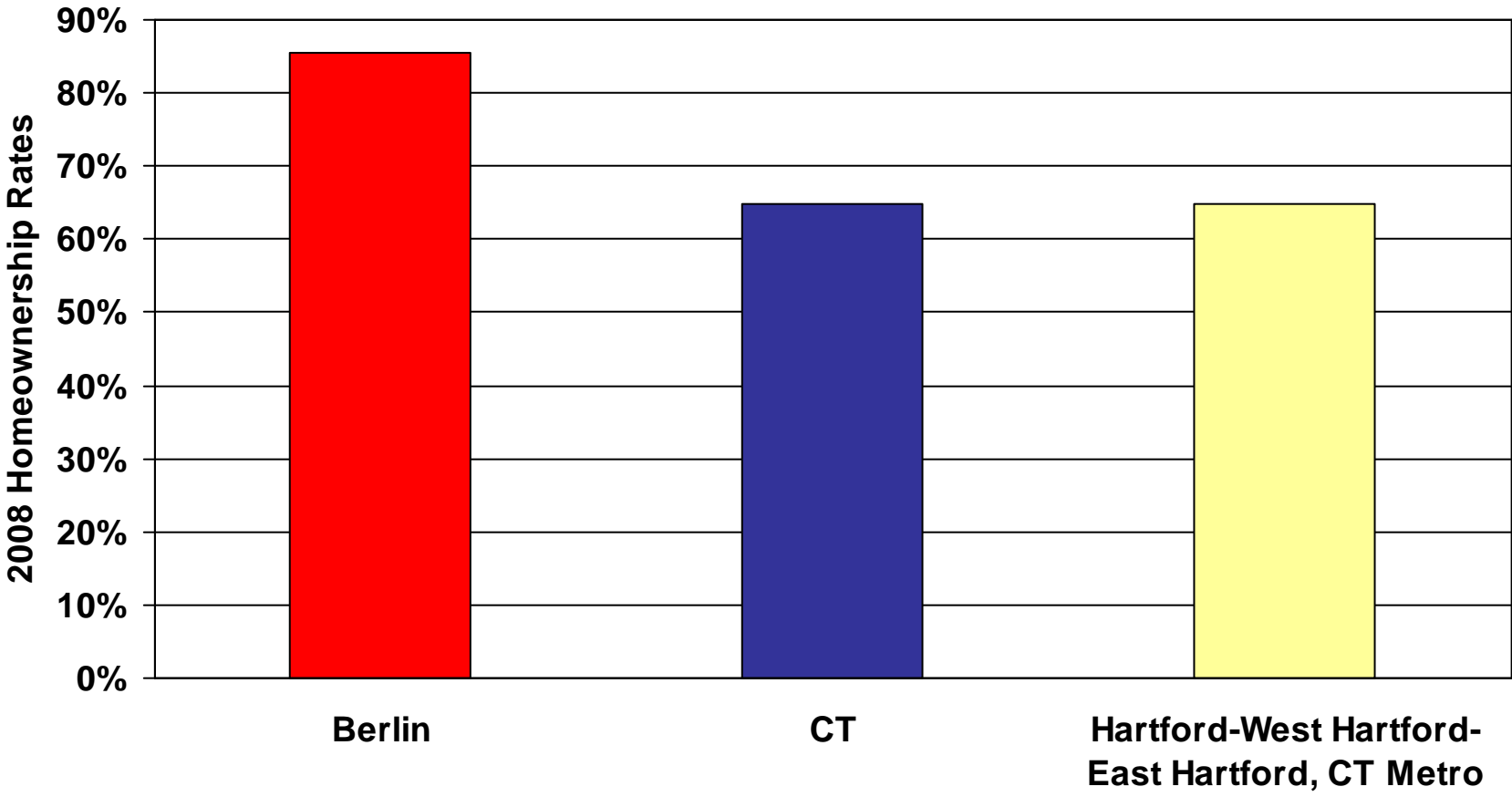
Source: CT Department of Labor

Berlin had a higher share of the population with bachelor's degrees than the other comparison regions.

2008 Educational Attainment (Population 25+ Years)	Berlin	Labor Shed	30 Min Drive Time Area	CT
Less than 9th Grade	3.8%	5.8%	5.4%	4.5%
9th - 12th Grade, No Diploma	5.0%	7.5%	7.2%	6.4%
High School Graduate	30.7%	32.2%	32.0%	30.1%
Some College, No Degree	20.1%	17.4%	17.6%	17.2%
Associate Degree	8.7%	7.6%	7.6%	7.5%
Bachelor's Degree	20.3%	16.8%	17.1%	19.6%
Graduate/Prof. Degree	11.5%	12.7%	13.2%	14.8%

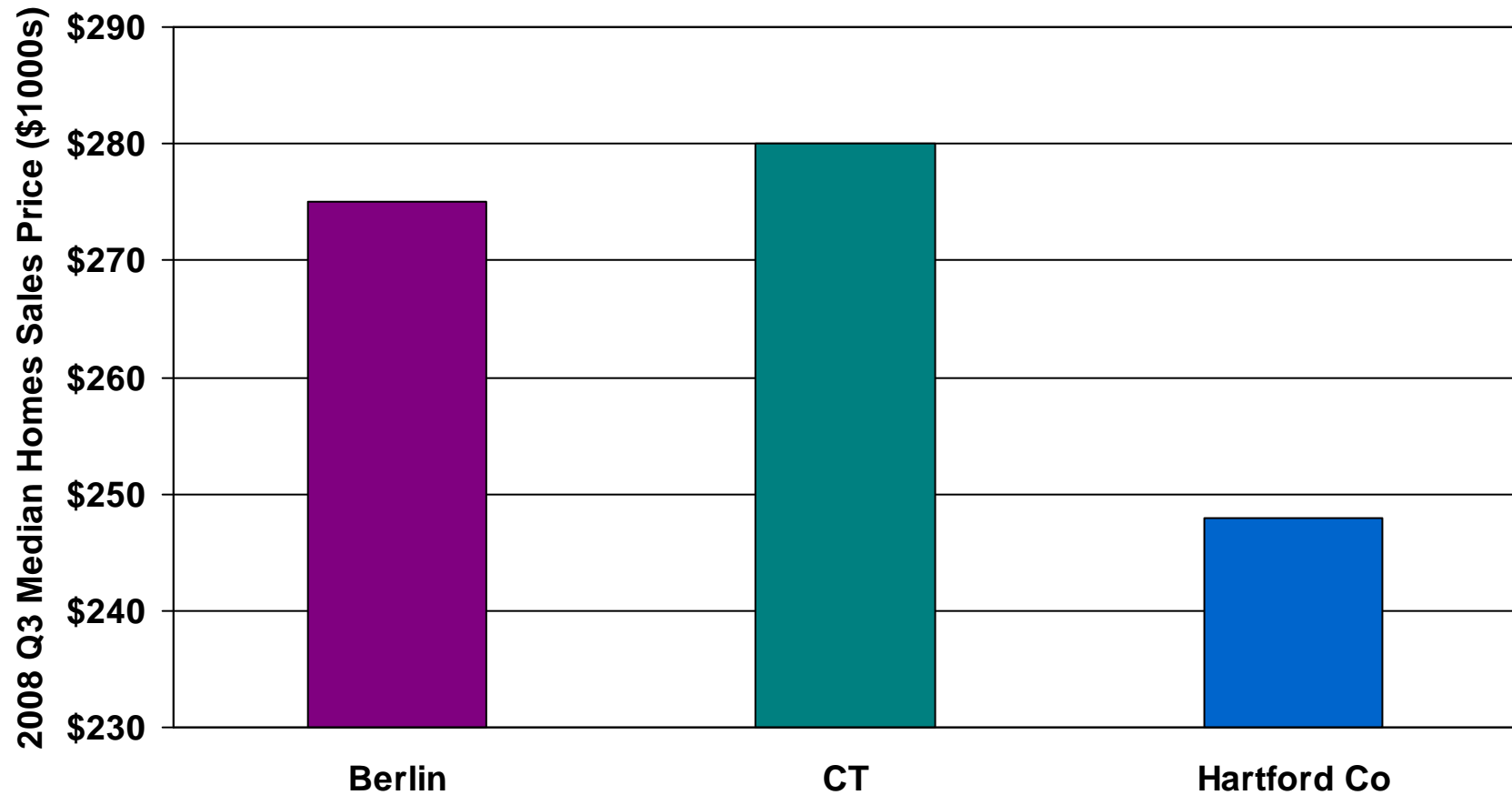
Source: CERC DataFinder

A high percentage of Berlin residents own their home.



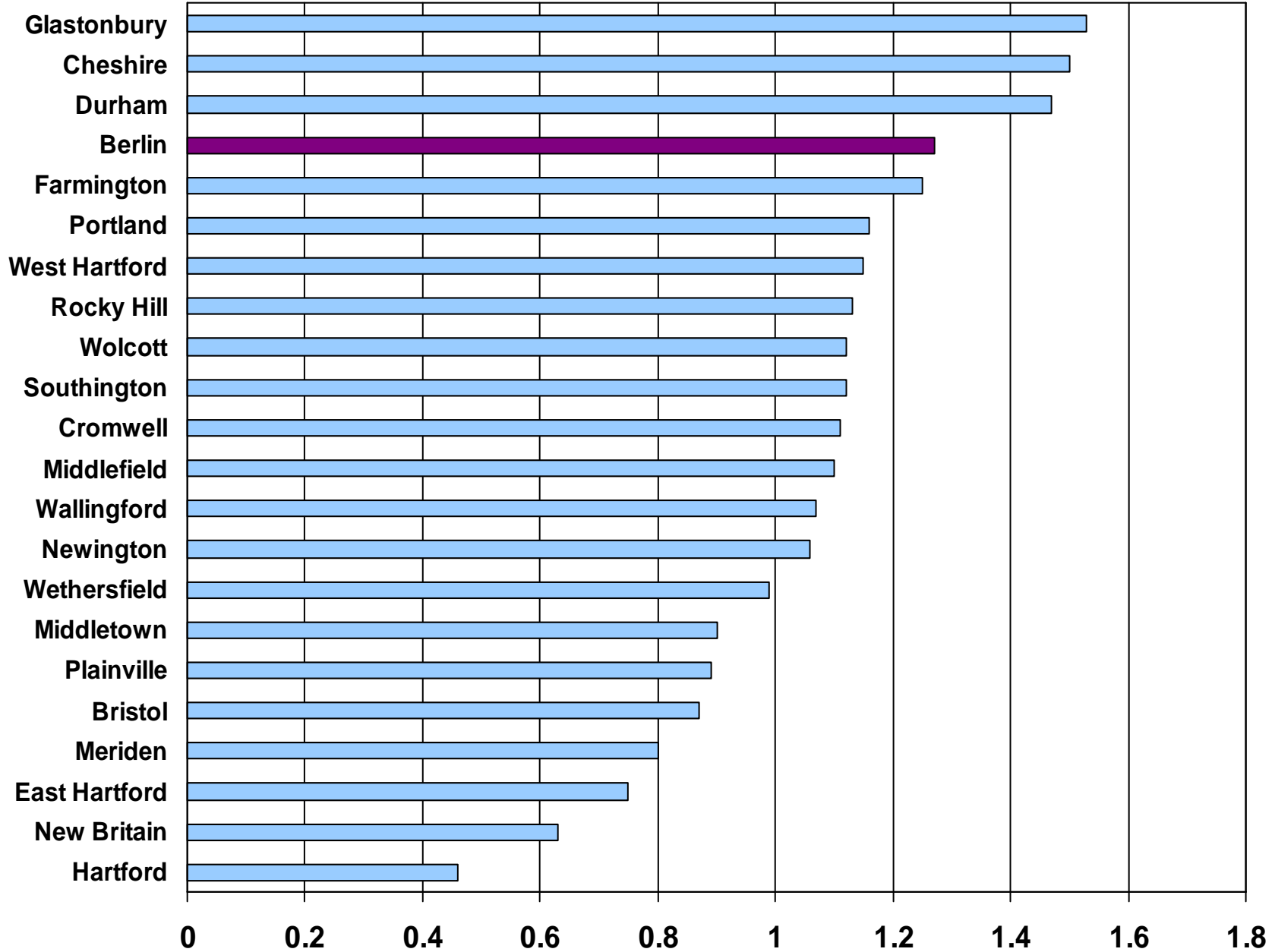
Source: CERC DataFinder

The median home sales price in Berlin approached the state average, which were both higher than the county.



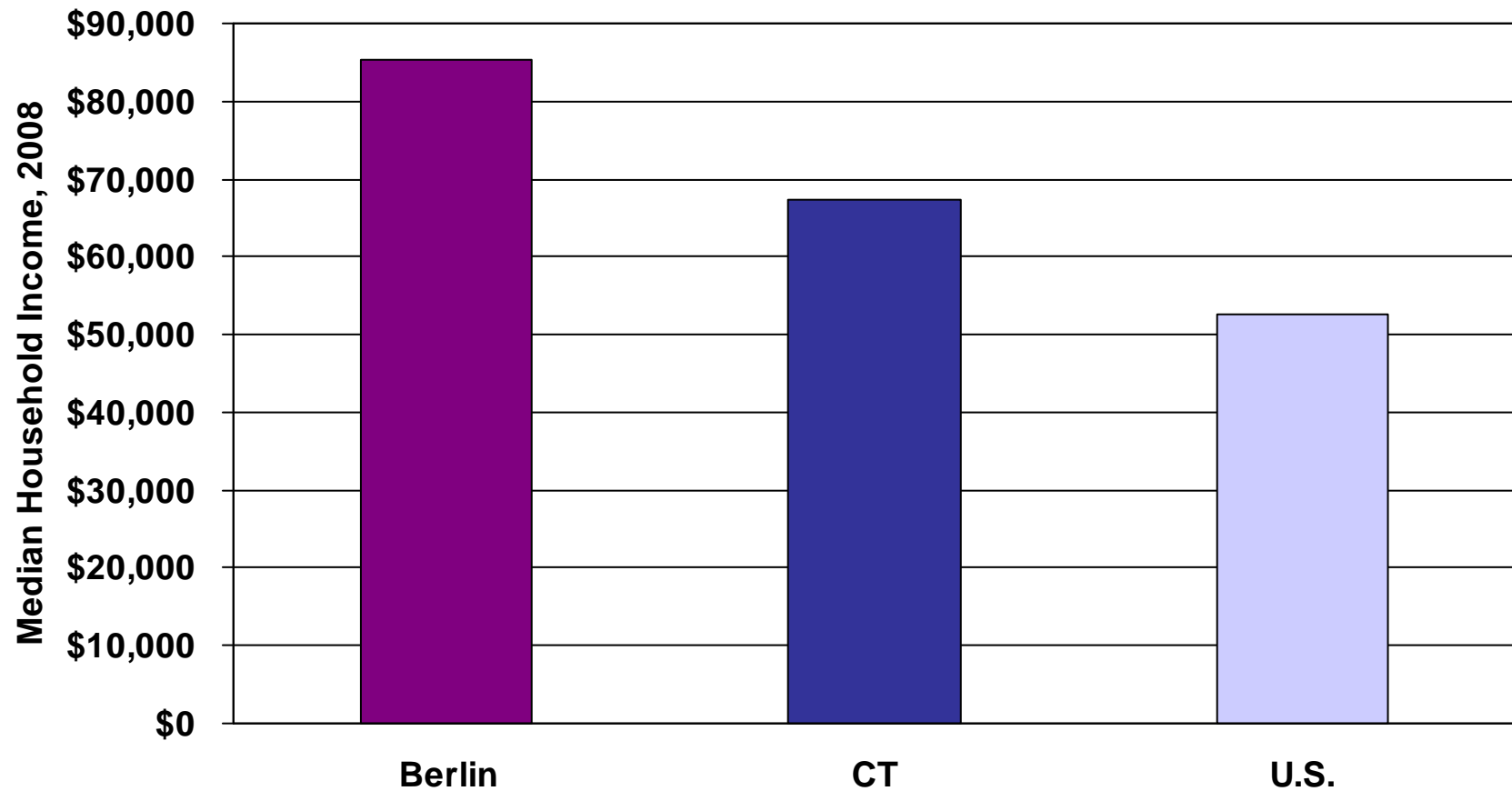
Source: CERC DataFinder

In 2008 Berlin's median household income was higher than most nearby Towns



Source: CERC DataFinder

Berlin's median household income was higher than the state and nation.



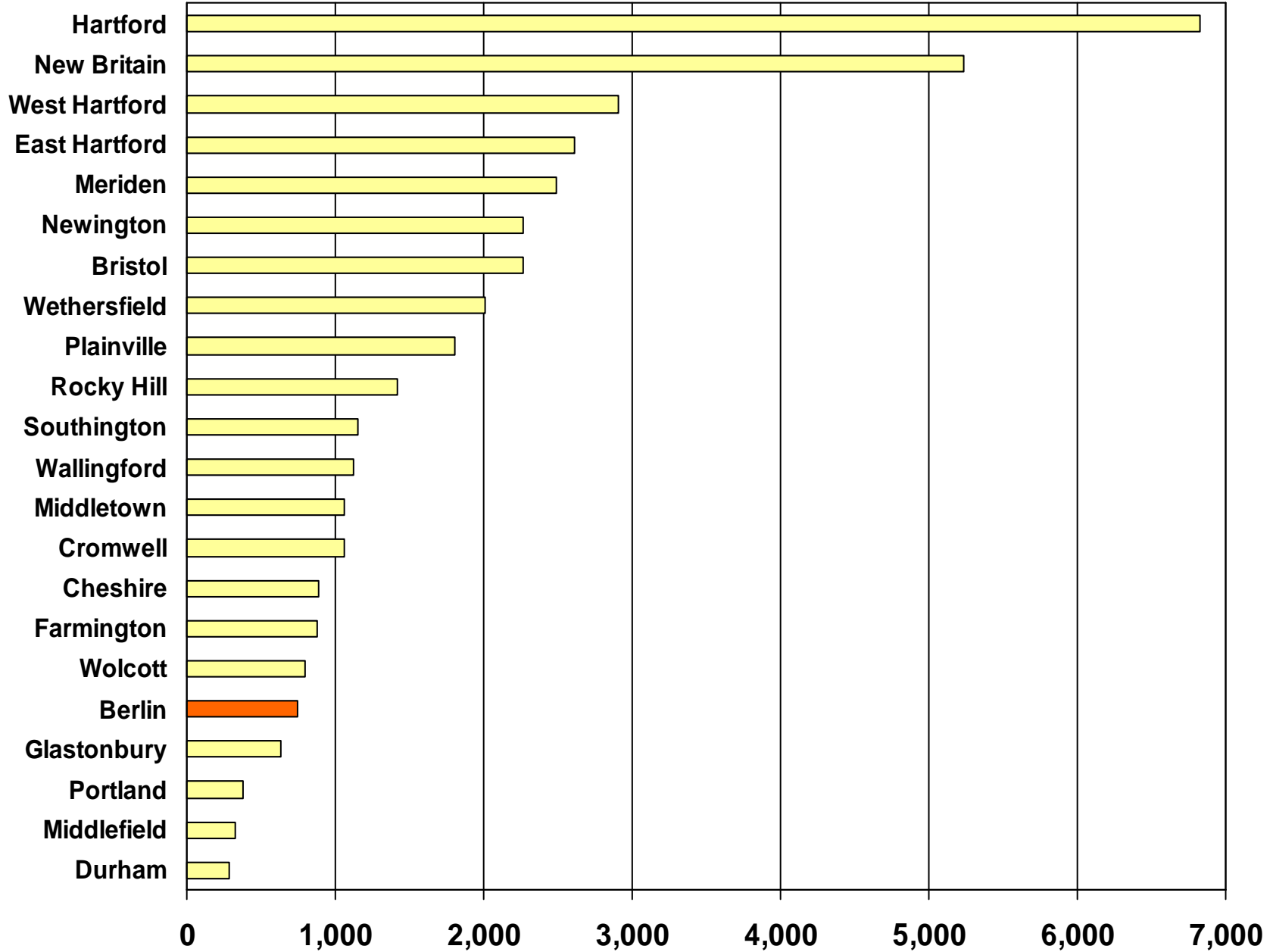
Source: CERC DataFinder

Berlin's population growth between 2000 and 2008 was substantially higher than the labor shed or the state.

	Population 2000	Population 2008	Population Growth 2000- 2008 (%)
Berlin	18,215	20,180	10.8%
Labor Shed	791,301	812,413	2.7%
Connecticut	3,405,565	3,540,771	4.0%

Source: CERC DataFinder

Berlin's population density is low in comparison to nearby Towns.



Source: CERC DataFinder