

Site Improvement Exhibits
StanChem Polymers, Inc.
401 Berlin Street, East Berlin, CT



Exhibit 1: Overall Existing Site Photo

Site Improvement Exhibits
StanChem Polymers, Inc.
401 Berlin Street, East Berlin, CT



Exhibit 2: Proposed Work Area

Site Improvement Exhibits
StanChem Polymers, Inc.
401 Berlin Street, East Berlin, CT

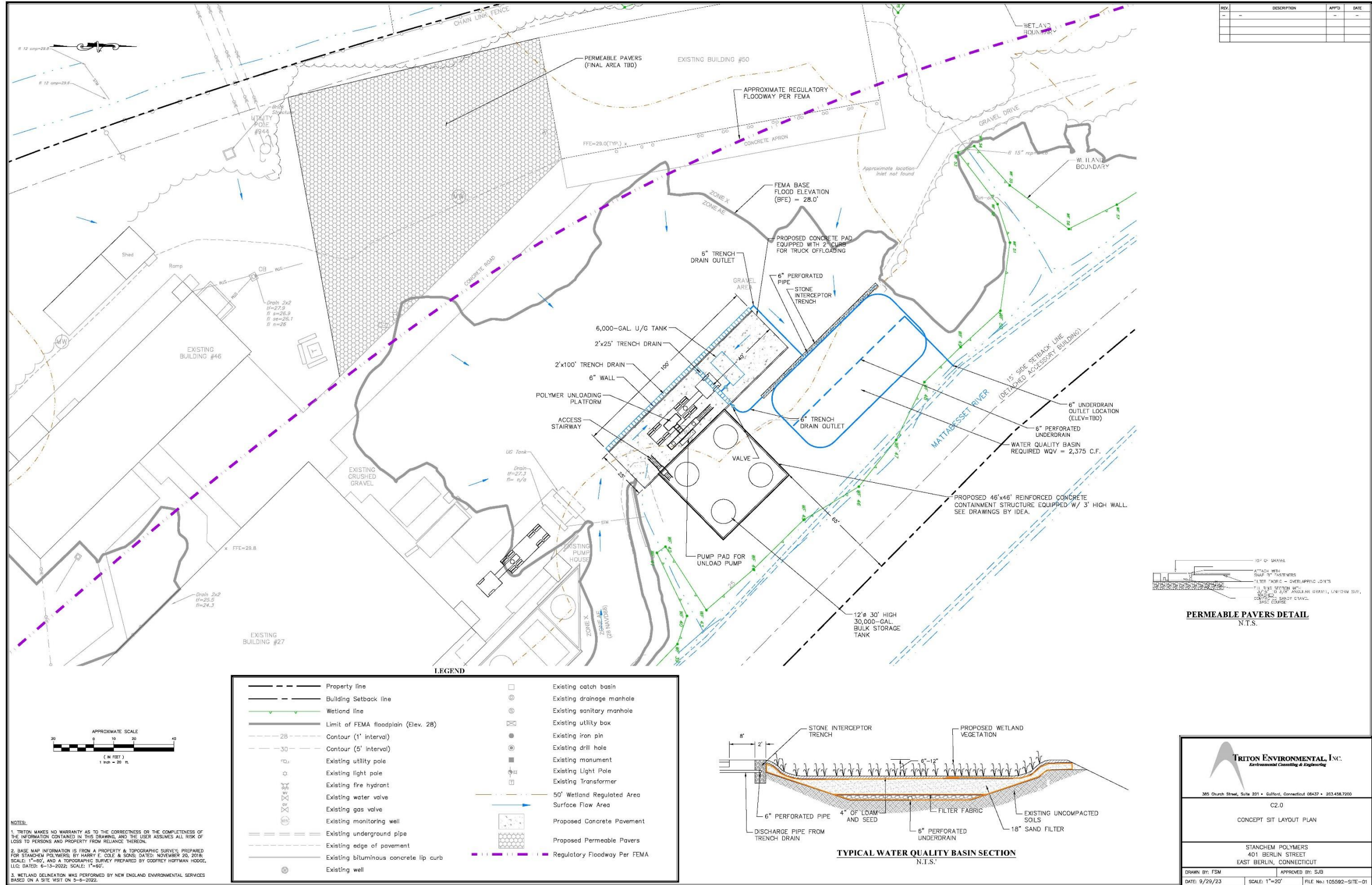


Exhibit 3: Existing Shed to be Demolished

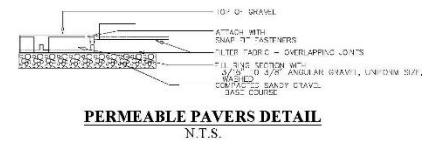


Exhibit 4: Area Dedicated for Stormwater Management

Site Improvement Exhibits
StanChem Polymers, Inc.
401 Berlin Street, East Berlin, CT

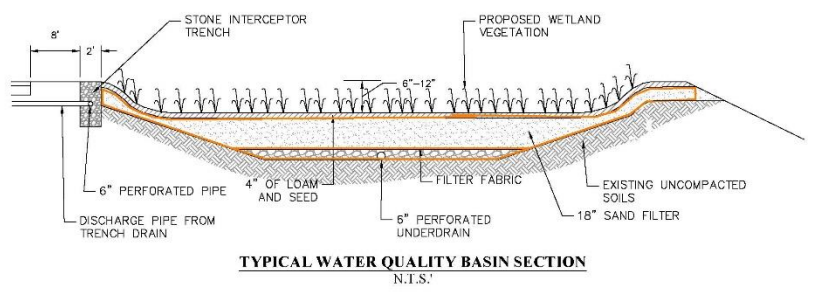


REV.	DESCRIPTION	APP'D.	DATE



LEGEND

— — — — —	Property line	□	Existing catch basin
— — — — —	Building Setback line	⊙	Existing drainage manhole
— — — — —	Wetland line	⊙	Existing sanitary manhole
— — — — —	Limit of FEMA floodplain (Elev. 28)	⊙	Existing utility box
— — — — —	Contour (1' interval)	⊙	Existing iron pin
— — — — —	Contour (5' interval)	⊙	Existing monument
— — — — —	Existing utility pole	⊙	Existing Light Pole
— — — — —	Existing light pole	⊙	Existing Transformer
— — — — —	Existing fire hydrant	⊙	50' Wetland Regulated Area
— — — — —	Existing water valve	⊙	Surface Flow Area
— — — — —	Existing gas valve	⊙	Proposed Concrete Pavement
— — — — —	Existing monitoring well	⊙	Proposed Permeable Pavers
— — — — —	Existing underground pipe	⊙	Regulatory Floodway Per FEMA
— — — — —	Existing edge of pavement	⊙	
— — — — —	Existing bituminous concrete lip curb	⊙	
⊙	Existing well		



TRITON ENVIRONMENTAL, INC.
Environmental Consulting & Engineering

365 Church Street, Suite 201 • Guilford, Connecticut 06437 • 203.438.7200

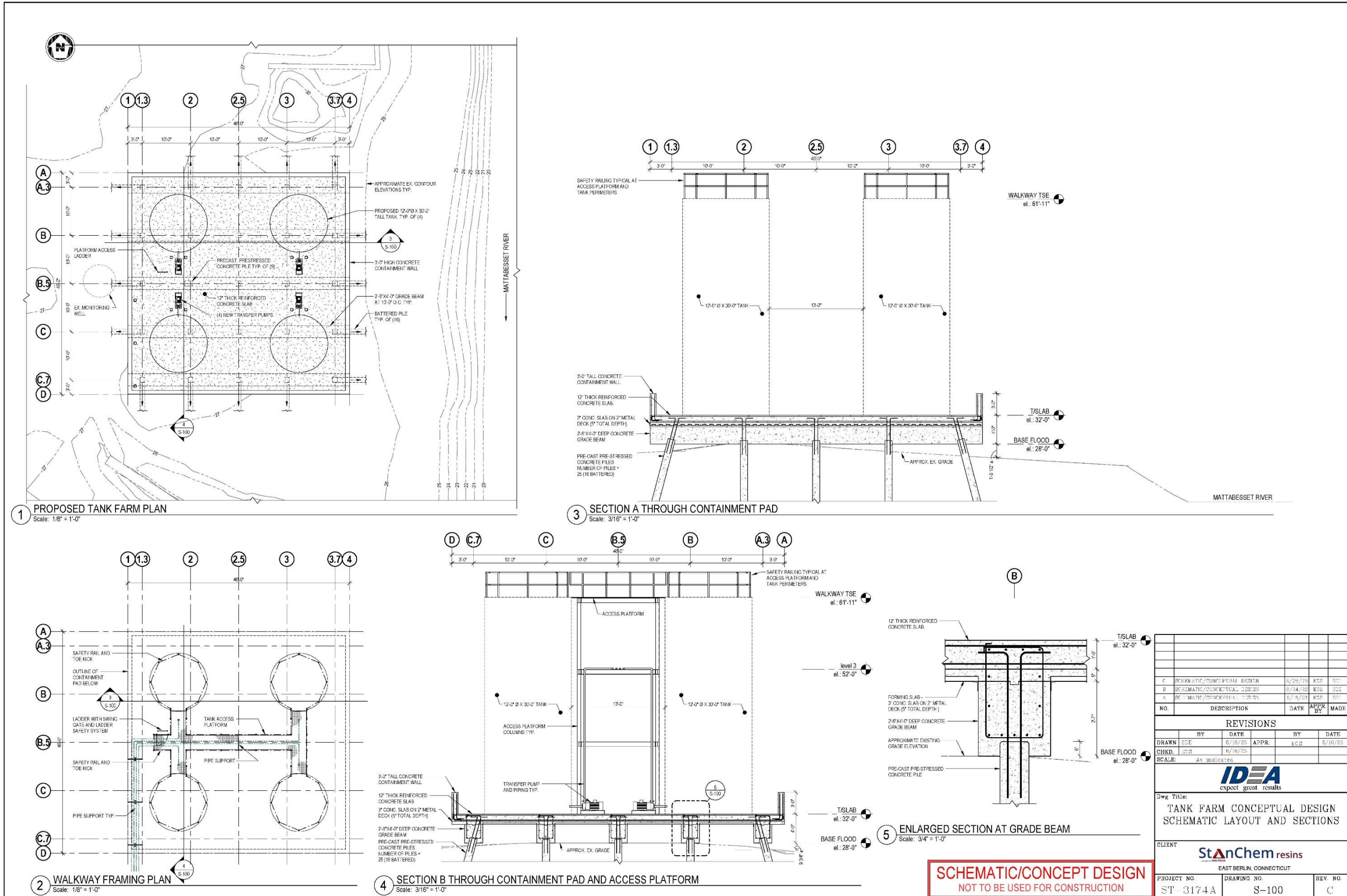
C2.0
 CONCEPT SITE LAYOUT PLAN

STAN-CHEM POLYMERS
 401 BERLIN STREET
 EAST BERLIN, CONNECTICUT

DRAWN BY: FSM APPROVED BY: SJB
 DATE: 9/29/23 SCALE: 1"=20' FILE No: 105592-SITE-01

Exhibit 5: Concept Site Layout Plan

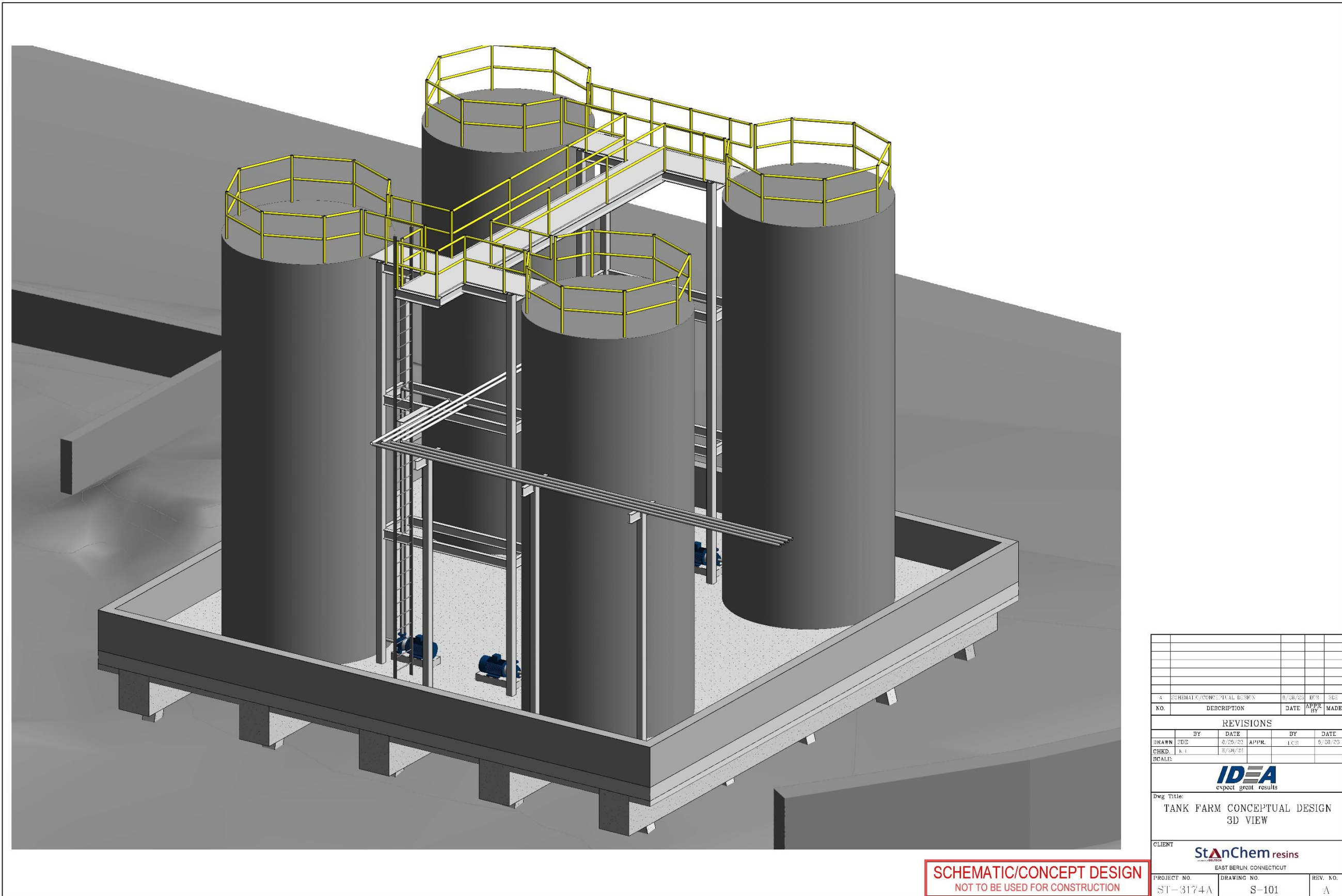
Site Improvement Exhibits
StanChem Polymers, Inc.
 401 Berlin Street, East Berlin, CT



SCHEMATIC/CONCEPT DESIGN
 NOT TO BE USED FOR CONSTRUCTION

NO.	DESCRIPTION	DATE	APP. BY	MADE
REVISIONS				
BY	DATE	APPR.	BY	DATE
DRAWN	SEE	6/16/25	ECC	6/16/25
CHKD.	SEE	6/16/25		
SCALE: As indicated.				
IDEA expect great results				
Dwg Title: TANK FARM CONCEPTUAL DESIGN SCHEMATIC LAYOUT AND SECTIONS				
CLIENT: StanChem resins EAST BERLIN, CONNECTICUT				
PROJECT NO.	DRAWING NO.	REV. NO.		
ST-3174A	S-100	C		

Exhibit 6: Tank Farm Conceptual Design



NO.	DESCRIPTION	DATE	APPR. BY	MADE
A	SCHEMATIC/CONCEPTUAL DESIGN	5/28/23	BS	SLB

REVISIONS					
BY	DATE	APPR.	BY	DATE	
EDS	5/25/23		LCS	5/30/23	
KJ	5/28/23				

SCALE:

IDEA
expect great results

Dwg Title:
TANK FARM CONCEPTUAL DESIGN
3D VIEW

CLIENT
StanChem resins
EAST BERLIN, CONNECTICUT

PROJECT NO.	DRAWING NO.	REV. NO.
ST-3174A	S-101	A

Exhibit 7: Tank Farm Rendering